

ABflo® 488 Rabbit anti-Mouse CD56/NCAM mAb

Catalog No.: A23369

Basic Information

Observed MW

Refer to figures

Calculated MW

67kDa/80kDa/93kDa/119kDa

Category

Primary antibody

Applications

FC

Cross-Reactivity

Mouse

CloneNo number

ARC60214

Conjugate

ABflo® 488. Ex:491nm. Em:516nm.

Recommended Dilutions

FC 5 µl per 10⁶ cells in
100 µl volume

Background

Predicted to enable LRR domain binding activity and phosphatase binding activity. Involved in commissural neuron axon guidance and regulation of semaphorin-plexin signaling pathway. Acts upstream of or within several processes, including homotypic cell-cell adhesion; positive regulation of calcium-mediated signaling; and regulation of exocyst assembly. Located in several cellular components, including external side of plasma membrane; growth cone; and neuronal cell body. Is expressed in several structures, including embryo mesenchyme; nervous system; sensory organ; skin; and urinary system. Human ortholog(s) of this gene implicated in bipolar disorder; middle cerebral artery infarction; and pancreatic cancer. Orthologous to human NCAM1 (neural cell adhesion molecule 1).

Immunogen Information

Gene ID

17967

Swiss Prot

P13595

Immunogen

Recombinant protein (or fragment). This information is considered to be commercially sensitive.

Synonyms

CD56; Ncam; E-NCAM; NCAM-1

Contact

☎ | 400-999-6126

✉ | cn.market@abclonal.com.cn

🌐 | www.abclonal.com.cn

Product Information

Source

Rabbit

Isotype

IgG

Purification

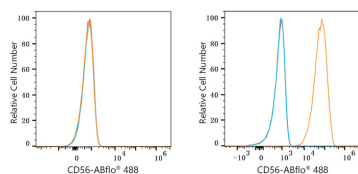
Affinity purification

Storage

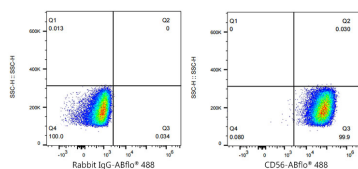
Store at 2-8°C. Avoid freeze.

Buffer: PBS containing 0.2% BSA, preserved with proclin300 or sodium azide (as specified on the Certificate of Analysis), pH 7.3.

Validation Data



Flow cytometry: 1×10^6 L-929 cells (negative control, left) and Neuro-2a cells (right) were surface-stained with ABflo® 488 Rabbit anti-Mouse CD56/NCAM mAb (A23369, 5 μ l/Test, orange line) or ABflo® 488 Rabbit IgG isotype control (A22069, 5 μ l/Test, blue line). Non-fluorescently stained cells were used as blank control (red line).



Flow cytometry: 1×10^6 Neuro-2a cells were surface-stained with ABflo® 488 Rabbit IgG isotype control (A22069, 5 μ l/Test, left) or ABflo® 488 Rabbit anti-Mouse CD56/NCAM mAb (A23369, 5 μ l/Test, right).