

**ABflo® 594 Rabbit anti-Human CD324/E-Cadherin mAb****Catalog No.: A23364****Basic Information****Observed MW**

Refer to figures

**Calculated MW**

90kDa/97kDa

**Category**

Primary antibody

**Applications**

FC

**Cross-Reactivity**

Human

**CloneNo number**

ARC57098

**Conjugate**

ABflo® 594. Ex:588nm. Em:604nm.

**Recommended Dilutions****FC** 5 µl per 10<sup>6</sup> cells in  
100 µl volume**Background**

This gene encodes a classical cadherin of the cadherin superfamily. Alternative splicing results in multiple transcript variants, at least one of which encodes a preproprotein that is proteolytically processed to generate the mature glycoprotein. This calcium-dependent cell-cell adhesion protein is comprised of five extracellular cadherin repeats, a transmembrane region and a highly conserved cytoplasmic tail. Mutations in this gene are correlated with gastric, breast, colorectal, thyroid and ovarian cancer. Loss of function of this gene is thought to contribute to cancer progression by increasing proliferation, invasion, and/or metastasis. The ectodomain of this protein mediates bacterial adhesion to mammalian cells and the cytoplasmic domain is required for internalization. This gene is present in a gene cluster with other members of the cadherin family on chromosome 16.

**Immunogen Information****Gene ID**

999

**Swiss Prot**

P12830

**Immunogen**

Recombinant protein (or fragment). This information is considered to be commercially sensitive.

**Synonyms**

UVO; CDHE; ECAD; LCAM; Arc-1; BCDS1; CD324

**Contact** | 400-999-6126 | [cn.market@abclonal.com.cn](mailto:cn.market@abclonal.com.cn) | [www.abclonal.com.cn](http://www.abclonal.com.cn)**Product Information****Source**

Rabbit

**Isotype**

IgG

**Purification**

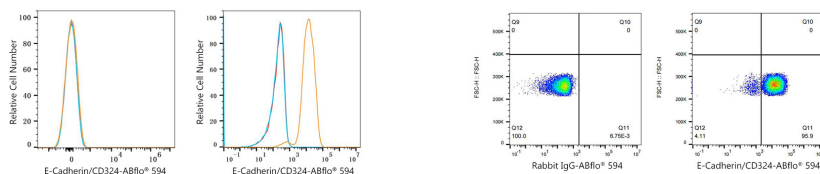
Affinity purification

**Storage**

Store at 2-8°C. Avoid freeze.

Buffer: PBS containing 0.2% BSA, preserved with proclin300 or sodium azide (as specified on the Certificate of Analysis), pH 7.3.

## Validation Data



Flow cytometry:  $1 \times 10^6$  K-562 cells (negative control, left) and A431 cells (right) were surface-stained with ABflo® 594 Rabbit anti-Human E-Cadherin/CD324 mAb (A23364, 5  $\mu$ l/Test, orange line) or ABflo® 594 Rabbit IgG isotype control (A23821, 5  $\mu$ l/Test, blue line). Non-fluorescently stained cells were used as blank control (red line).

Flow cytometry:  $1 \times 10^6$  A431 cells were surface-stained with ABflo® 594 Rabbit IgG isotype control (A23821, 5  $\mu$ l/Test, left) or ABflo® 594 Rabbit anti-Human E-Cadherin/CD324 mAb (A23364, 5  $\mu$ l/Test, right).