

# ABflo® 647 Rabbit anti-Human VEGFR2/CD309 mAb

Catalog No.: A23357

## Basic Information

### Observed MW

**Calculated MW**  
152kDa

**Category**  
Primary antibody

**Applications**  
FC

**Cross-Reactivity**  
Human

**CloneNo number**  
ARC60202

**Conjugate**  
ABflo® 647. Ex:648nm. Em:664nm.

## Background

Vascular endothelial growth factor (VEGF) is a major growth factor for endothelial cells. This gene encodes one of the two receptors of the VEGF. This receptor, known as kinase insert domain receptor, is a type III receptor tyrosine kinase. It functions as the main mediator of VEGF-induced endothelial proliferation, survival, migration, tubular morphogenesis and sprouting. The signalling and trafficking of this receptor are regulated by multiple factors, including Rab GTPase, P2Y purine nucleotide receptor, integrin alphaVbeta3, T-cell protein tyrosine phosphatase, etc.. Mutations of this gene are implicated in infantile capillary hemangiomas.

## Recommended Dilutions

**FC** 5 µl per 10<sup>6</sup> cells in  
100 µl volume

## Immunogen Information

<b>Gene ID</b> 3791	<b>Swiss Prot</b> P35968
------------------------	-----------------------------

### Immunogen

Recombinant protein (or fragment). This information is considered to be commercially sensitive.

### Synonyms

FLK1; CD309; VEGFR; VEGFR2

## Contact

☎		400-999-6126
✉		cn.market@abclonal.com.cn
🌐		www.abclonal.com.cn

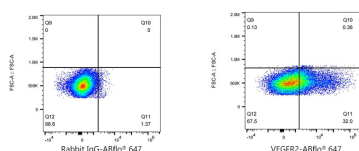
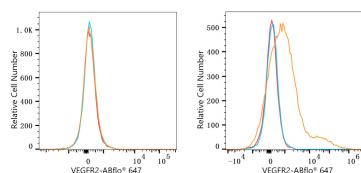
## Product Information

<b>Source</b> Rabbit	<b>Isotype</b> IgG	<b>Purification</b> Affinity purification
-------------------------	-----------------------	--

### Storage

Store at 2-8°C. Avoid freeze.  
Buffer: PBS containing 0.2% BSA, preserved with proclin300 or sodium azide (as specified on the Certificate of Analysis), pH 7.3.

## Validation Data



Flow cytometry:  $1 \times 10^6$  293F cells (negative control, Left) and 293F (Transfection) cells were surface-stained with ABflo® 647 Rabbit anti-Human VEGFR2/CD309 mAb (A23357, 5  $\mu$ l/Test, orange line) or ABflo® 647 Rabbit IgG isotype control (A22070, 5  $\mu$ l/Test, blue line). Non-fluorescently stained cells were used as blank control (red line).

Flow cytometry:  $1 \times 10^6$  293F (Transfection) cells were surface-stained with ABflo® 647 Rabbit IgG isotype control (A22070, 5  $\mu$ l/Test, left) or ABflo® 647 Rabbit anti-Human VEGFR2/CD309 mAb (A23357, 5  $\mu$ l/Test, right).