

ABflo® 647 Rabbit anti-Human TIGIT mAb

Catalog No.: A23354

Basic Information

Observed MW

Calculated MW

18kDa/26kDa

Category

Primary antibody

Applications

FC

Cross-Reactivity

Human

CloneNo number

ARC59696

Conjugate

ABflo® 647. Ex:648nm. Em:664nm.

Background

This gene encodes a member of the PVR (poliovirus receptor) family of immunoglobulin proteins. The product of this gene is expressed on several classes of T cells including follicular B helper T cells (TFH). The protein has been shown to bind PVR with high affinity; this binding is thought to assist interactions between TFH and dendritic cells to regulate T cell dependent B cell responses.

Recommended Dilutions

FC 5 µl per 10⁶ cells in
100 µl volume

Immunogen Information

Gene ID

201633

Swiss Prot

Q495A1

Immunogen

Recombinant protein (or fragment). This information is considered to be commercially sensitive.

Synonyms

VSIG9; VSTM3; WUCAM

Contact

 | 400-999-6126

 | cn.market@abclonal.com.cn

 | www.abclonal.com.cn

Product Information

Source

Rabbit

Isotype

IgG

Purification

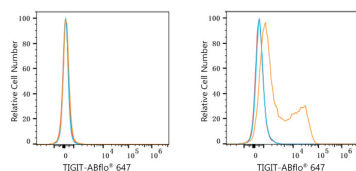
Affinity purification

Storage

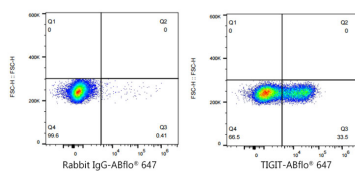
Store at 2-8°C. Avoid freeze.

Buffer: PBS containing 0.2% BSA, preserved with proclin300 or sodium azide (as specified on the Certificate of Analysis), pH 7.3.

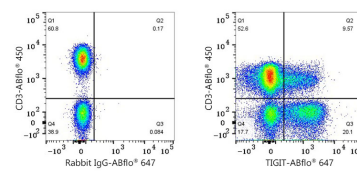
Validation Data



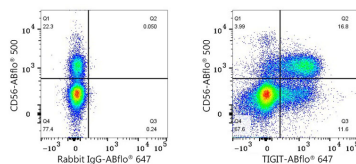
Flow cytometry: 1×10^6 293F cells (negative control, Left) and 293F (Transfection, right) cells were surface-stained with ABflo® 647 Rabbit anti-Human TIGIT mAb (A23354, 5 µl/Test, orange line) or ABflo® 647 Rabbit IgG isotype control (A22070, 5 µl/Test, blue line). Non-fluorescently stained cells were used as blank control (red line).



Flow cytometry: 1×10^6 293F (Transfection) cells were surface-stained with ABflo® 647 Rabbit IgG isotype control (A22070, 5 µl/Test, left) or ABflo® 647 Rabbit anti-Human TIGIT mAb (A23354, 5 µl/Test, right).



Flow cytometry: 1×10^6 Human PBMC were surface-stained with ABflo® 450 Rabbit anti-Human CD3 (A27177, 5 µl/Test) and ABflo® 647 Rabbit IgG isotype control (A22070, 5 µl/Test, left) or ABflo® 647 Rabbit anti-Human TIGIT mAb (A23354, 5 µl/Test, right). Cells in the lymphocyte gate were used for analysis.



Flow cytometry: 1×10^6 Human PBMC were surface-stained with ABflo® 500 Rabbit anti-Human CD56 (A26643, 5 µl/Test) and ABflo® 647 Rabbit IgG isotype control (A22070, 5 µl/Test, left) or ABflo® 647 Rabbit anti-Human TIGIT mAb (A23354, 5 µl/Test, right). Cells in the lymphocyte gate were used for analysis.