

# ABflo® 594 Rabbit anti-Dog CD3G mAb

Catalog No.: A23352

## Basic Information

### Observed MW

### Calculated MW

20kDa

### Category

Primary antibody

### Applications

FC

### Cross-Reactivity

Dog

### CloneNo number

ARC57945

### Conjugate

ABflo® 594. Ex:588nm. Em:604nm.

## Background

The protein encoded by this gene is the CD3-gamma polypeptide, which together with CD3-epsilon, -delta and -zeta, and the T-cell receptor alpha/beta and gamma/delta heterodimers, forms the T-cell receptor-CD3 complex. This complex plays an important role in coupling antigen recognition to several intracellular signal-transduction pathways. The genes encoding the epsilon, gamma and delta polypeptides are located in the same cluster on chromosome 11. Defects in this gene are associated with T cell immunodeficiency.

## Recommended Dilutions

FC 5 µl per 10<sup>6</sup> cells in  
100 µl volume

## Immunogen Information

### Gene ID

489383

### Swiss Prot

### Immunogen

Recombinant protein (or fragment). This information is considered to be commercially sensitive.

### Synonyms

## Contact

☎ | 400-999-6126

✉ | [cn.market@abclonal.com.cn](mailto:cn.market@abclonal.com.cn)

🌐 | [www.abclonal.com.cn](http://www.abclonal.com.cn)

## Product Information

### Source

Rabbit

### Isotype

IgG

### Purification

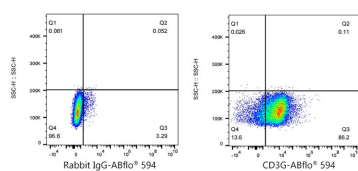
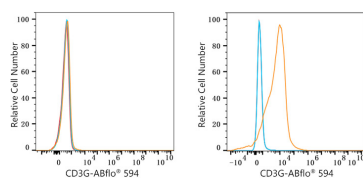
Affinity purification

### Storage

Store at 2-8°C. Avoid freeze.

Buffer: PBS with 0.03% proclin300, 0.2% BSA, pH7.3.

## Validation Data



Flow cytometry:  $1 \times 10^6$  293F cells (negative control, Left) and 293F (Transfection) cells were surface-stained with ABflo® 594 Rabbit anti-Dog CD3G mAb (A23352, 5  $\mu$ l/Test, orange line) or ABflo® 594 Rabbit IgG isotype control (A23821, 5  $\mu$ l/Test, blue line). Non-fluorescently stained cells were used as blank control (red line).

Flow cytometry:  $1 \times 10^6$  293F (Transfection) cells were surface-stained with ABflo® 594 Rabbit IgG isotype control (5  $\mu$ l/Test, left) or ABflo® 594 Rabbit anti-Dog CD3G mAb (A23352, 5  $\mu$ l/Test, right).