

ABflo® 488 Rabbit anti-Human CD144/VE Cadherin mAb

Catalog No.: A23350

Basic Information

Observed MW

Calculated MW

88kDa

Category

Primary antibody

Applications

FC

Cross-Reactivity

Human

CloneNo number

ARC58061

Conjugate

ABflo® 488. Ex:491nm. Em:516nm.

Background

This gene encodes a classical cadherin of the cadherin superfamily. The encoded preproprotein is proteolytically processed to generate the mature glycoprotein. This calcium-dependent cell-cell adhesion molecule is comprised of five extracellular cadherin repeats, a transmembrane region and a highly conserved cytoplasmic tail. Functioning as a classical cadherin by imparting to cells the ability to adhere in a homophilic manner, this protein plays a role in endothelial adherens junction assembly and maintenance. This gene is located in a gene cluster in a region on the long arm of chromosome 16 that is involved in loss of heterozygosity events in breast and prostate cancer.

Recommended Dilutions

FC 5 µl per 10⁶ cells in
100 µl volume

Immunogen Information

Gene ID

1003

Swiss Prot

P33151

Immunogen

Recombinant protein (or fragment). This information is considered to be commercially sensitive.

Synonyms

7B4; CD144

Contact

☎ | 400-999-6126

✉ | cn.market@abclonal.com.cn

🌐 | www.abclonal.com.cn

Product Information

Source

Rabbit

Isotype

IgG

Purification

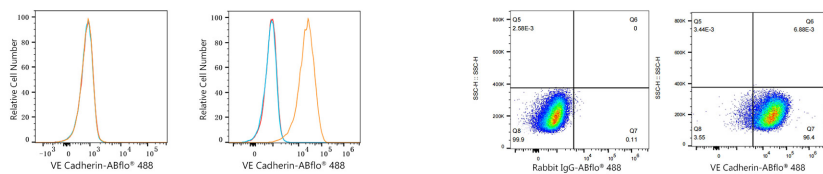
Affinity purification

Storage

Store at 2-8°C. Avoid freeze.

Buffer: PBS containing 0.2% BSA, preserved with proclin300 or sodium azide (as specified on the Certificate of Analysis), pH 7.3.

Validation Data



Flow cytometry: 1×10^6 HeLa cells (negative control, left) and BeWo cells (right) were surface-stained with ABflo® 488 Rabbit anti-Human CD144/VE Cadherin mAb (A23350, 5 μ l/Test, orange line) or ABflo® 488 Rabbit IgG isotype control (A22069, 5 μ l/Test, blue line). Non-fluorescently stained cells were used as blank control (red line).

Flow cytometry: 1×10^6 BeWo cells were surface-stained with ABflo® 488 Rabbit IgG isotype control (A22069, 5 μ l/Test, left) or ABflo® 488 Rabbit anti-Human CD144/VE Cadherin mAb (A23350, 5 μ l/Test, right).