

IGF2BP3/IMP3 Rabbit mAb

Catalog No.: A23295 **Recombinant** **4 Publications**

Basic Information

Observed MW

70 kDa

Calculated MW

64 kDa

Category

Primary antibody

Applications

WB,IP,IF-P,IHC-P,ELISA

Cross-Reactivity

Human, Mouse, Rat

CloneNo number

ARC60319

Background

The protein encoded by this gene is primarily found in the nucleolus, where it can bind to the 5' UTR of the insulin-like growth factor II leader 3 mRNA and may repress translation of insulin-like growth factor II during late development. The encoded protein contains several KH domains, which are important in RNA binding and are known to be involved in RNA synthesis and metabolism. A pseudogene exists on chromosome 7, and there are putative pseudogenes on other chromosomes.

Recommended Dilutions

WB 1:2000 - 1:8000

IP 0.5µg-4µg antibody for
200µg-400µg extracts of
whole cells

IF-P 1:50 - 1:200

IHC-P 1:200 - 1:1000

ELISA Recommended starting
concentration is 1 µg/mL.
Please optimize the
concentration based on
your specific assay
requirements.

Immunogen Information

Gene ID

10643

Swiss Prot

O00425

Immunogen

Recombinant protein (or fragment). This information is considered to be commercially sensitive.

Synonyms

KOC; CT98; IMP3; KOC1; IMP-3; VICKZ3; IGF2BP3/IMP3

Product Information

Source

Rabbit

Isotype

IgG

Purification

Affinity purification

Storage

Store at -20°C. Avoid freeze / thaw cycles.

Buffer: PBS containing 50% glycerol and 0.05% BSA, preserved with proclin300 or sodium azide (as specified on the Certificate of Analysis), pH 7.3.

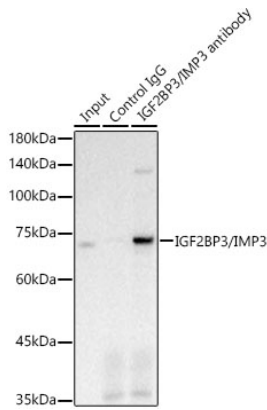
Contact

☎ | 400-999-6126

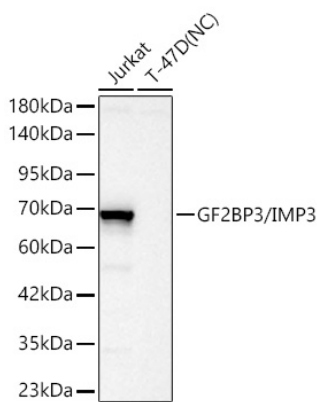
✉ | cn.market@abclonal.com.cn

🌐 | www.abclonal.com.cn

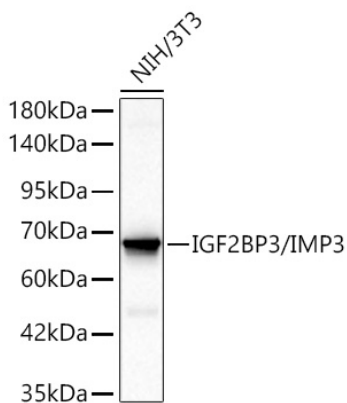
Validation Data



Immunoprecipitation analysis of 3 µg extracts of SH-SY5Y cells using 300µg IGF2BP3/IMP3 Rabbit mAb (A23295). Western blot was performed from the immunoprecipitate using IGF2BP3/IMP3 Rabbit mAb (A23295) at a dilution of 1:2000.

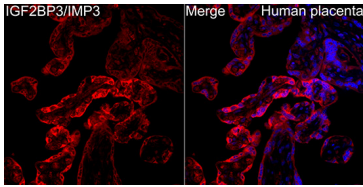


Western blot analysis of various lysates using IGF2BP3/IMP3 Rabbit mAb (A23295) at 1:2000 dilution incubated overnight at 4°C.
Secondary antibody: HRP-conjugated Goat anti-Rabbit IgG (H+L) (AS014) at 1:10000 dilution.
Lysates/proteins: 25 µg per lane.
Blocking buffer: 3% nonfat dry milk in TBST.
Detection: ECL Basic Kit (RM00020).
Negative control (NC): T-47D.
Exposure time: 30 s.

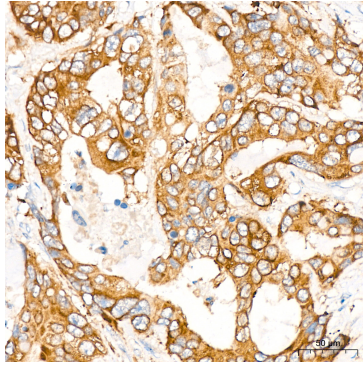


Western blot analysis of lysates from NIH/3T3 cells using IGF2BP3/IMP3 Rabbit mAb (A23295) at 1:2000 dilution incubated overnight at 4°C.
Secondary antibody: HRP-conjugated Goat anti-Rabbit IgG (H+L) (AS014) at 1:10000 dilution.
Lysates/proteins: 25 µg per lane.
Blocking buffer: 3% nonfat dry milk in TBST.
Detection: ECL Basic Kit (RM00020).
Exposure time: 30 s.

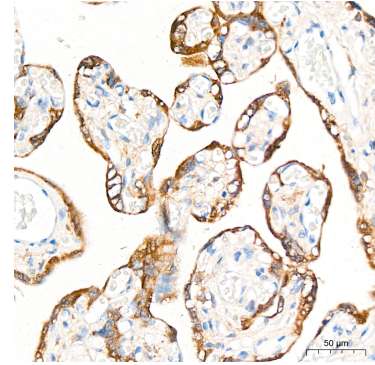
Validation Data



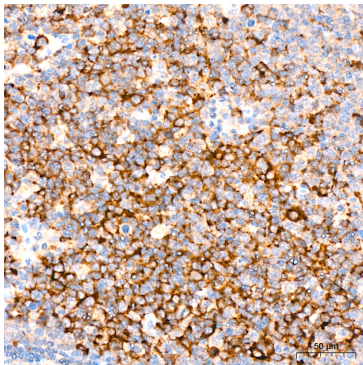
Immunofluorescence analysis of paraffin-embedded human placenta using IGF2BP3/IMP3 Rabbit mAb (A23295) at a dilution of 1:50 (40x lens). Secondary antibody: Cy3-conjugated Goat anti-Rabbit IgG (H+L) (AS007) at 1:500 dilution. Blue: DAPI for nuclear staining.



Immunohistochemistry analysis of paraffin-embedded Human colon carcinoma tissue using IGF2BP3/IMP3 Rabbit mAb (A23295) at a dilution of 1:200 (40x lens). High pressure antigen retrieval was performed with 0.01 M citrate buffer (pH 6.0) prior to IHC staining.



Immunohistochemistry analysis of paraffin-embedded Human placenta tissue using IGF2BP3/IMP3 Rabbit mAb (A23295) at a dilution of 1:200 (40x lens). High pressure antigen retrieval was performed with 0.01 M citrate buffer (pH 6.0) prior to IHC staining.



Immunohistochemistry analysis of paraffin-embedded Human tonsil tissue using IGF2BP3/IMP3 Rabbit mAb (A23295) at a dilution of 1:200 (40x lens). High pressure antigen retrieval was performed with 0.01 M citrate buffer (pH 6.0) prior to IHC staining.