

[KD Validated] NF2/Merlin Rabbit mAb

Catalog No.: A23186 **Recombinant**

Basic Information

Observed MW

70kDa

Calculated MW

70kDa

Category

Primary antibody

Applications

WB, IHC-P, ELISA

Cross-Reactivity

Human, Mouse, Rat

CloneNo number

ARC59903

Background

This gene encodes a protein that is similar to some members of the ERM (ezrin, radixin, moesin) family of proteins that link cytoskeletal components with proteins in the cell membrane. The encoded protein is involved in regulation of contact-dependent inhibition of cell proliferation and functions in cell-cell adhesion and transmembrane signaling. The encoded protein has been shown to interact with cell-surface proteins, proteins involved in cytoskeletal dynamics, and proteins involved in regulating ion transport. Disruption of this protein's function has been implicated in tumorigenesis and metastasis. Mutations in this gene are associated with neurofibromatosis type II which is characterized by nervous system and skin tumors and ocular abnormalities.

Recommended Dilutions

WB 1:1000 - 1:5000**IHC-P** 1:50 - 1:200

ELISA Recommended starting concentration is 1 µg/mL. Please optimize the concentration based on your specific assay requirements.

Immunogen Information

Gene ID

4771

Swiss Prot

P35240

Immunogen

Recombinant protein (or fragment). This information is considered to be commercially sensitive.

Synonyms

ACN; SCH; BANF; merlin-1; in

Contact

 | 400-999-6126 | cn.market@abclonal.com.cn | www.abclonal.com.cn

Product Information

Source

Rabbit

Isotype

IgG

Purification

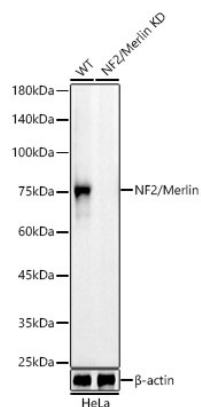
Affinity purification

Storage

Store at -20°C. Avoid freeze / thaw cycles.

Buffer: PBS containing 50% glycerol and 0.05% BSA, preserved with proclin300 or sodium azide (as specified on the Certificate of Analysis), pH 7.3.

Validation Data



Western blot analysis of lysates from wild type (WT) and NF2/Merlin knockdown (KD) HeLa cells, using [KD Validated] NF2/Merlin Rabbit mAb (A23186) at 1:2000 dilution.

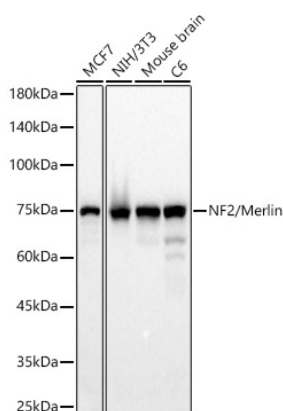
Secondary antibody: HRP-conjugated Goat anti-Rabbit IgG (H+L) (AS014) at 1:10000 dilution.

Lysates/proteins: 25µg per lane.

Blocking buffer: 3% nonfat dry milk in TBST.

Detection: ECL Basic Kit (RM00020).

Exposure time: 90s.



Western blot analysis of various lysates, using [KD Validated] NF2/Merlin Rabbit mAb (A23186) at 1:2000 dilution.

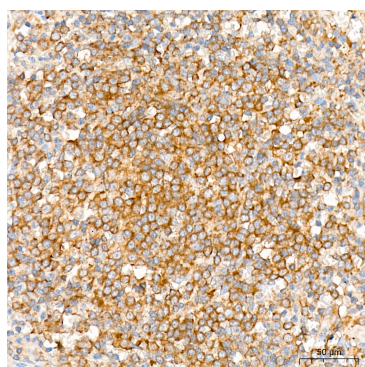
Secondary antibody: HRP-conjugated Goat anti-Rabbit IgG (H+L) (AS014) at 1:10000 dilution.

Lysates/proteins: 25µg per lane.

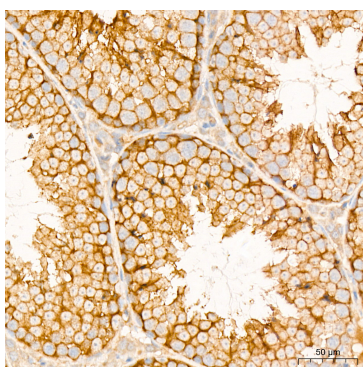
Blocking buffer: 3% nonfat dry milk in TBST.

Detection: ECL Basic Kit (RM00020).

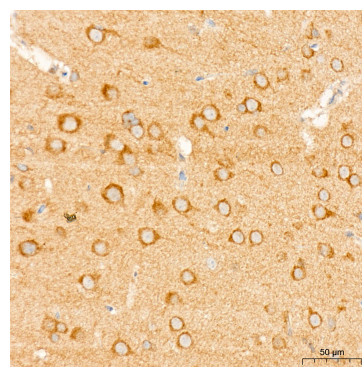
Exposure time: 30s.



Immunohistochemistry analysis of paraffin-embedded Human spleen tissue using [KD Validated] NF2/Merlin Rabbit mAb (A23186) at a dilution of 1:200 (40x lens). High pressure antigen retrieval was performed with 0.01 M citrate buffer (pH 6.0) prior to IHC staining.

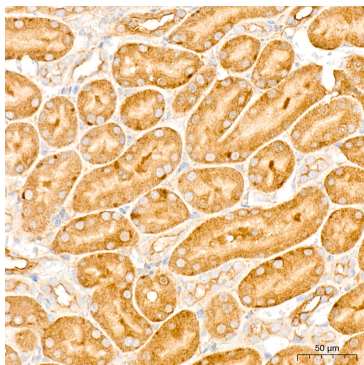


Immunohistochemistry analysis of paraffin-embedded Mouse testis tissue using [KD Validated] NF2/Merlin Rabbit mAb (A23186) at a dilution of 1:200 (40x lens). High pressure antigen retrieval was performed with 0.01 M citrate buffer (pH 6.0) prior to IHC staining.



Immunohistochemistry analysis of paraffin-embedded Rat brain tissue using [KD Validated] NF2/Merlin Rabbit mAb (A23186) at a dilution of 1:200 (40x lens). High pressure antigen retrieval was performed with 0.01 M citrate buffer (pH 6.0) prior to IHC staining.

Validation Data



Immunohistochemistry analysis of paraffin-embedded Rat kidney tissue using [KD Validated] NF2/Merlin Rabbit mAb (A23186) at a dilution of 1:200 (40x lens). High pressure antigen retrieval was performed with 0.01 M citrate buffer (pH 6.0) prior to IHC staining.