

ABflo® 647 Rabbit anti-Human CD299/DC-SIGNR mAb

Catalog No.: A23174

Basic Information

Observed MW

Calculated MW

24kDa-45kDa

Category

Primary antibody

Applications

FC

Cross-Reactivity

Human

CloneNo number

ARC59314

Conjugate

ABflo® 647. Ex:648nm. Em:664nm.

Recommended Dilutions

FC 5 µl per 10⁶ cells in
100 µl volume

Background

This gene encodes a C-type lectin that functions in cell adhesion and pathogen recognition. This receptor recognizes a wide range of evolutionarily divergent pathogens with a large impact on public health, including tuberculosis mycobacteria, and viruses including Ebola, hepatitis C, HIV-1, influenza A, West Nile virus and the SARS-CoV acute respiratory syndrome coronavirus. The protein is organized into four distinct domains: a C-terminal carbohydrate recognition domain, a flexible tandem-repeat neck domain of variable length, a transmembrane region and an N-terminal cytoplasmic domain involved in internalization. This gene is closely related in terms of both sequence and function to a neighboring gene, CD209 (Gene ID: 30835), also known as DC-SIGN. The two genes differ in viral recognition and expression patterns, with this gene showing high expression in endothelial cells of the liver, lymph node and placenta. Polymorphisms in the tandem repeat neck domain are associated with resistance to SARS infection.

Immunogen Information

Gene ID

10332

Swiss Prot

Q9H2X3

Immunogen

Recombinant protein (or fragment). This information is considered to be commercially sensitive.

Synonyms

CD299; LSIGN; CD209L; L-SIGN; DCSIGNR; HP10347; DC-SIGN2; DC-SIGNR

Contact

☎ | 400-999-6126

✉ | cn.market@abclonal.com.cn

🌐 | www.abclonal.com.cn

Product Information

Source

Rabbit

Isotype

IgG

Purification

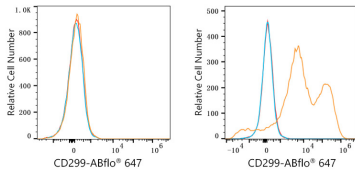
Affinity purification

Storage

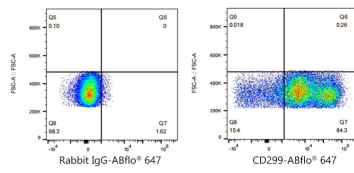
Store at 2-8°C. Avoid freeze.

Buffer: PBS containing 0.2% BSA, preserved with proclin300 or sodium azide (as specified on the Certificate of Analysis), pH 7.3.

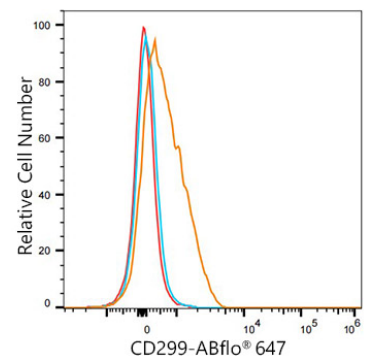
Validation Data



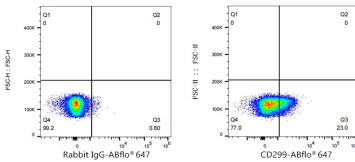
Flow cytometry: 1×10^6 293T cells (negative control, Left) and 293T (Transfection, right) cells were surface-stained with ABflo® 647 Rabbit anti-Human DC-SIGNR/CD299 mAb (A23174, 5 μ l/Test, orange line) or ABflo® 647 Rabbit IgG isotype control (A22070, 5 μ l/Test, blue line). Non-fluorescently stained cells were used as blank control (red line).



Flow cytometry: 1×10^6 293T (Transfection) cells were surface-stained with ABflo® 647 Rabbit IgG isotype control (A22070, 5 μ l/Test, left) or ABflo® 647 Rabbit anti-Human DC-SIGNR/CD299 mAb (A23174, 5 μ l/Test, right).



Flow cytometry: 1×10^6 Human PBMC were surface-stained with ABflo® 647 Rabbit anti-Human DC-SIGNR/CD299 mAb (A23174, 5 μ l/Test, orange line) or ABflo® 647 Rabbit IgG isotype control (A22070, 5 μ l/Test, blue line). Non-fluorescently stained cells were used as blank control (red line).



Flow cytometry: 1×10^6 Human PBMC were surface-stained with ABflo® 647 Rabbit IgG isotype control (A22070, 5 μ l/Test, left) or ABflo® 647 Rabbit anti-Human DC-SIGNR/CD299 mAb (A23174, 5 μ l/Test, right).