

# ABflo® 647 Rabbit anti-Mouse CD34 mAb

Catalog No.: A23108

2 Publications

## Basic Information

### Observed MW

### Calculated MW

41kDa

### Category

Primary antibody

### Applications

FC

### Cross-Reactivity

Mouse

### CloneNo number

ARC58336

### Conjugate

ABflo® 647. Ex:648nm. Em:664nm.

## Background

Enables sulfate binding activity. Acts upstream of or within leukocyte migration. Located in cytoplasm; external side of plasma membrane; and extracellular region. Is expressed in several structures, including alimentary system; cardiovascular system; extraembryonic component; genitourinary system; and skin. Orthologous to human CD34 (CD34 molecule).

## Recommended Dilutions

FC 5 µl per 10<sup>6</sup> cells in  
100 µl volume

## Immunogen Information

### Gene ID

12490

### Swiss Prot

Q64314

### Immunogen

Recombinant protein (or fragment). This information is considered to be commercially sensitive.

### Synonyms

CD34; CD34 molecule; GIG3; MORT1

## Contact

☎ | 400-999-6126

✉ | [cn.market@abclonal.com.cn](mailto:cn.market@abclonal.com.cn)

🌐 | [www.abclonal.com.cn](http://www.abclonal.com.cn)

## Product Information

### Source

Rabbit

### Isotype

IgG

### Purification

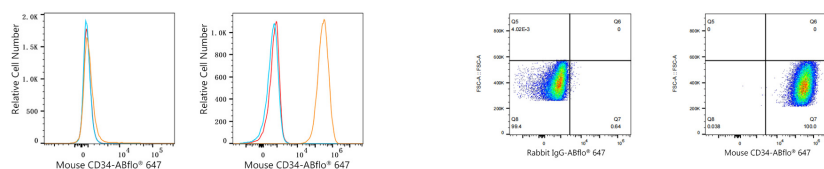
Affinity purification

### Storage

Store at 2-8°C. Avoid freeze.

Buffer: PBS containing 0.2% BSA, preserved with proclin300 or sodium azide (as specified on the Certificate of Analysis), pH 7.3.

## Validation Data



Flow cytometry:  $1 \times 10^6$  Neuro-2a cells (negative control, Left) and NIH/3T3 cells (Right) were surface-stained with ABflo® 647 Rabbit anti-Mouse CD34 mAb (A23108, 5  $\mu$ l/Test, orange line) or ABflo® 647 Rabbit IgG isotype control (A22070, 5  $\mu$ l/Test, blue line). Non-fluorescently stained cells were used as blank control (red line).

Flow cytometry:  $1 \times 10^6$  NIH/3T3 cells were surface-stained with ABflo® 647 Rabbit IgG isotype control (A22070, 5  $\mu$ l/Test, left) or ABflo® 647 Rabbit anti-Mouse CD34 mAb (A23108, 5  $\mu$ l/Test, right).