

ABflo® 647 Rabbit anti-Human CD371/CLEC12A mAb

Catalog No.: A23106

Basic Information

Observed MW

Calculated MW
31KDa

Category
Primary antibody

Applications
FC

Cross-Reactivity
Human

CloneNo number
ARC55557

Conjugate
ABflo® 647. Ex:648nm. Em:664nm.

Recommended Dilutions

FC 5 µl per 10⁶ cells in
100 µl volume

Contact

 | 400-999-6126

 | cn.market@abclonal.com.cn

 | www.abclonal.com.cn

Background

This gene encodes a member of the C-type lectin/C-type lectin-like domain (CTL/CTLD) superfamily. Members of this family share a common protein fold and have diverse functions, such as cell adhesion, cell-cell signaling, glycoprotein turnover, and roles in inflammation and immune response. The protein encoded by this gene is a negative regulator of granulocyte and monocyte function. Several alternatively spliced transcript variants of this gene have been described, but the full-length nature of some of these variants has not been determined. This gene is closely linked to other CTL/CTLD superfamily members in the natural killer gene complex region on chromosome 12p13.

Immunogen Information

Gene ID 160364
Swiss Prot Q5QGZ9-2

Immunogen

Recombinant protein (or fragment). This information is considered to be commercially sensitive.

Synonyms

CLL1; MICL; CD371; CLL-1; DCAL-2

Product Information

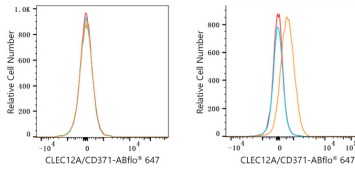
Source Rabbit
Isotype IgG
Purification Affinity purification

Storage

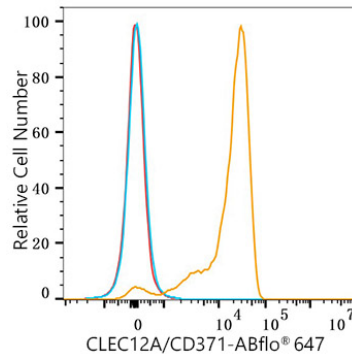
Store at 2-8°C. Avoid freeze.

Buffer: PBS containing 0.2% BSA, preserved with proclin300 or sodium azide (as specified on the Certificate of Analysis), pH 7.3.

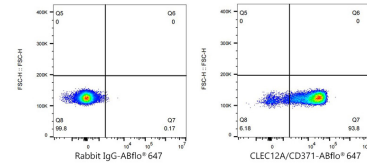
Validation Data



Flow cytometry: 1×10^6 K-562 cells (negative control, Left) and U-937 cells (Right) were surface-stained with ABflo® 647 Rabbit anti-Human CLEC12A/CD371 mAb (A23106, 5 μ l/Test, orange line) or ABflo® 647 Rabbit IgG isotype control (A22070, 5 μ l/Test, blue line). Non-fluorescently stained cells were used as blank control (red line).



Flow cytometry: 1×10^6 Human PBMC were surface-stained with ABflo® 647 Rabbit anti-Human CLEC12A/CD371 mAb (A23106, 5 μ l/Test, orange line) or ABflo® 647 Rabbit IgG isotype control (A22070, 5 μ l/Test, blue line). Non-fluorescently stained cells were used as blank control (red line).



Flow cytometry: 1×10^6 Human PBMC were surface-stained with ABflo® 647 Rabbit IgG isotype control (A22070, 5 μ l/Test, left) or ABflo® 647 Rabbit anti-Human CLEC12A/CD371 mAb (A23106, 5 μ l/Test, right).