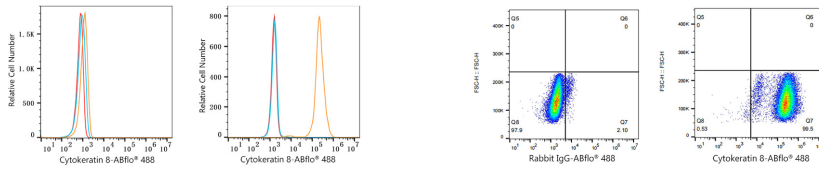




## Validation Data



Flow cytometry:  $1 \times 10^6$  Jurkat cells (negative control, Left) and HeLa cells (Right) were intracellularly-stained with ABflo® 488 Rabbit anti-Human Cytokeratin 8 mAb (A23018, 5  $\mu$ l/Test, orange line) or ABflo® 488 Rabbit IgG isotype control (A22069, 5  $\mu$ l/Test, blue line). Non-fluorescently stained cells was used as blank control (red line).

Flow cytometry:  $1 \times 10^6$  HeLa cells were intracellularly-stained with ABflo® 488 Rabbit IgG isotype control (A22069, 5  $\mu$ l/Test, left) or ABflo® 488 Rabbit anti-Human Cytokeratin 8 mAb (A23018, 5  $\mu$ l/Test, right).