

# TFF1/pS2 Rabbit mAb

Catalog No.: A22999 **Recombinant**

## Basic Information

### Observed MW

13kDa

### Calculated MW

9kDa

### Category

Primary antibody

### Applications

ELISA, WB, IF/ICC, IP

### Cross-Reactivity

Human, Mouse, Rat

### CloneNo number

ARC59782

## Background

Members of the trefoil family are characterized by having at least one copy of the trefoil motif, a 40-amino acid domain that contains three conserved disulfides. They are stable secretory proteins expressed in gastrointestinal mucosa. Their functions are not defined, but they may protect the mucosa from insults, stabilize the mucus layer, and affect healing of the epithelium. This gene, which is expressed in the gastric mucosa, has also been studied because of its expression in human tumors. This gene and two other related trefoil family member genes are found in a cluster on chromosome 21.

## Recommended Dilutions

**WB** 1:500 - 1:1000

**IF/ICC** 1:50 - 1:200

**IP** 0.5µg-4µg antibody for  
200µg-400µg extracts of  
whole cells

## Immunogen Information

### Gene ID

7031

### Swiss Prot

P04155

### Immunogen

A synthesized peptide derived from human TFF1/pS2.

### Synonyms

pS2; BCEI; HPS2; HP1.A; pNR-2; D21S21; TFF1/pS2

## Contact

☎ | 400-999-6126

✉ | [cn.market@abclonal.com.cn](mailto:cn.market@abclonal.com.cn)

🌐 | [www.abclonal.com.cn](http://www.abclonal.com.cn)

## Product Information

### Source

Rabbit

### Isotype

IgG

### Purification

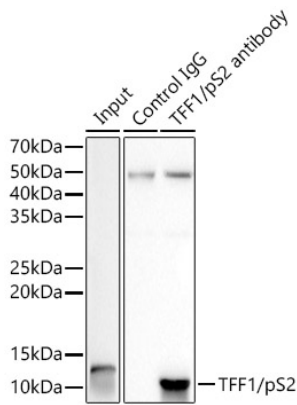
Affinity purification

### Storage

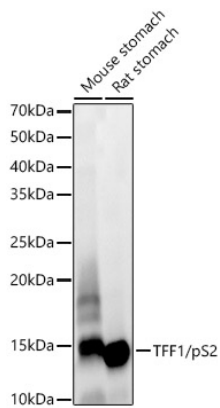
Store at -20°C. Avoid freeze / thaw cycles.

Buffer: PBS with 0.05% proclin300, 0.05% BSA, 50% glycerol, pH7.3.

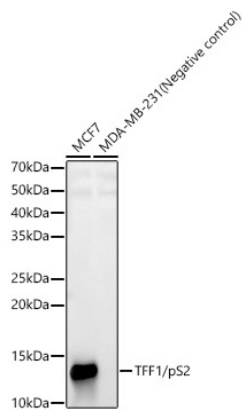
Validation Data



Immunoprecipitation analysis of 300 µg extracts of MCF7 cells using 3 µg TFF1/pS2 antibody (A22999). Western blot was performed from the immunoprecipitate using TFF1/pS2 antibody (A22999) at a dilution of 1:1000.



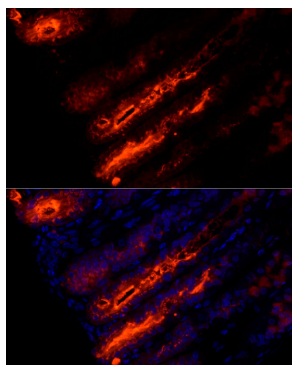
Western blot analysis of various lysates, using TFF1/pS2 Rabbit mAb (A22999) at 1:1000 dilution. Secondary antibody: HRP Goat Anti-Rabbit IgG (H+L) (AS014) at 1:10000 dilution. Lysates/proteins: 25µg per lane. Blocking buffer: 3% nonfat dry milk in TBST. Detection: ECL Enhanced Kit (RM00021). Exposure time: 60s.



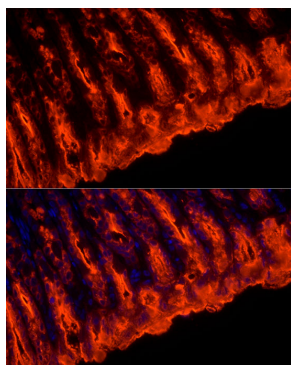
Western blot analysis of various lysates, using TFF1/pS2 Rabbit mAb (A22999) at 1:1000 dilution. Secondary antibody: HRP Goat Anti-Rabbit IgG (H+L) (AS014) at 1:10000 dilution. Lysates/proteins: 25µg per lane. Blocking buffer: 3% nonfat dry milk in TBST. Detection: ECL Enhanced Kit (RM00021). Exposure time: 180s.

## Validation Data

---



Immunofluorescence analysis of paraffin-embedded mouse spleen using TFF1/pS2 Rabbit mAb (A22999) at dilution of 1:100 (40x lens). Secondary antibody: Cy3 Goat Anti-Rabbit IgG (H+L) (AS007) at 1:500 dilution. Blue: DAPI for nuclear staining. Perform high pressure antigen retrieval with 0.01 M citrate buffer (pH 6.0) prior to IF staining.



Immunofluorescence analysis of paraffin-embedded rat stomach using TFF1/pS2 Rabbit mAb (A22999) at dilution of 1:100 (40x lens). Secondary antibody: Cy3 Goat Anti-Rabbit IgG (H+L) (AS007) at 1:500 dilution. Blue: DAPI for nuclear staining. Perform high pressure antigen retrieval with 0.01 M citrate buffer (pH 6.0) prior to IF staining.