

# Ripk3 Rabbit mAb

Catalog No.: A22961

Recombinant

1 Publications

## Basic Information

**Observed MW**

46-62kDa

**Calculated MW**

53kDa

**Category**

Primary antibody

**Applications**

WB, ELISA

**Cross-Reactivity**

Human

**CloneNo number**

ARC3153

## Background

Enables NF-kappaB-inducing kinase activity and protein serine/threonine kinase activity. Involved in several processes, including execution phase of necroptosis; hematopoietic or lymphoid organ development; and regulation of programmed cell death. Acts upstream of or within several processes, including I-kappaB kinase/NF-kappaB signaling; positive regulation of intrinsic apoptotic signaling pathway; and positive regulation of protein deacetylation. Located in cytoplasm and nucleus. Is expressed in several structures, including alimentary system; hemolymphoid system gland; male reproductive gland or organ; primitive streak; and turbinate bone primordium. Orthologous to human RIPK3 (receptor interacting serine/threonine kinase 3).

## Recommended Dilutions

**WB** 1:500 - 1:1000**ELISA** Recommended starting concentration is 1 µg/mL. Please optimize the concentration based on your specific assay requirements.

## Immunogen Information

**Gene ID**

56532

**Swiss Prot**

Q9QZL0

**Immunogen**

Synthetic peptide. This information is considered to be commercially sensitive.

**Synonyms**

Rip3; 2610528K09Rik; Ripk3

## Contact

 | 400-999-6126 | [cn.market@abclonal.com.cn](mailto:cn.market@abclonal.com.cn) | [www.abclonal.com.cn](http://www.abclonal.com.cn)

## Product Information

**Source**

Rabbit

**Isotype**

IgG

**Purification**

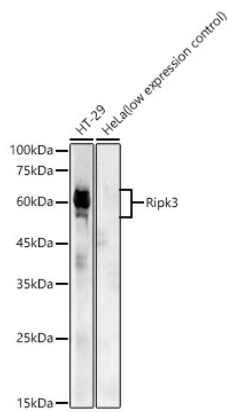
Affinity purification

**Storage**

Store at -20°C. Avoid freeze / thaw cycles.

Buffer: 10 mM sodium HEPES and 150 mM NaCl with proclin300 or sodium azide (as specified on the Certificate of Analysis), 100 µg/ml BSA, 50% Glycerol, pH 7.5

# Validation Data



Western blot analysis of various lysates, using Ripk3 Rabbit mAb (A22961) at 1:1000 dilution.  
Secondary antibody: HRP-conjugated Goat anti-Rabbit IgG (H+L) (AS014) at 1:10000 dilution.  
Lysates/proteins: 25µg per lane.  
Blocking buffer: 3% nonfat dry milk in TBST.  
Detection: ECL Enhanced Kit (RM00021).  
Exposure time: 180s.