

# RNASEH1 Mouse mAb

**Catalog No.: A22956**

## Basic Information

### Observed MW

35 kDa

### Calculated MW

32 kDa

### Category

Primary antibody

### Applications

WB, ELISA

### Cross-Reactivity

Human, Mouse, Rat

### CloneNo number

AMC0586

## Background

This gene encodes an endonuclease that specifically degrades the RNA of RNA-DNA hybrids and plays a key role in DNA replication and repair. Alternate in-frame start codon initiation results in the production of alternate isoforms that are directed to the mitochondria or to the nucleus. The production of the mitochondrial isoform is modulated by an upstream open reading frame (uORF). Mutations in this gene have been found in individuals with progressive external ophthalmoplegia with mitochondrial DNA deletions, autosomal recessive 2. Alternative splicing results in additional coding and non-coding transcript variants. Pseudogenes of this gene have been defined on chromosomes 2 and 17.

## Recommended Dilutions

**WB** 1:2000 - 1:5000

**ELISA** Recommended starting concentration is 1 µg/mL. Please optimize the concentration based on your specific assay requirements.

## Immunogen Information

### Gene ID

246243

### Swiss Prot

O60930

### Immunogen

Recombinant protein (or fragment). This information is considered to be commercially sensitive.

### Synonyms

RNH1; H1RNA; PEOB2; RNASEH1

## Contact

☎ | 400-999-6126

✉ | [cn.market@abclonal.com.cn](mailto:cn.market@abclonal.com.cn)

🌐 | [www.abclonal.com.cn](http://www.abclonal.com.cn)

## Product Information

### Source

Mouse

### Isotype

IgG1 kappa

### Purification

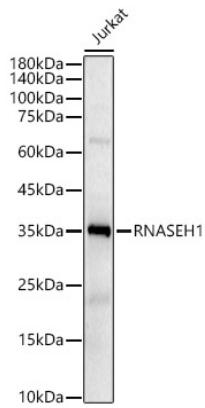
Affinity purification

### Storage

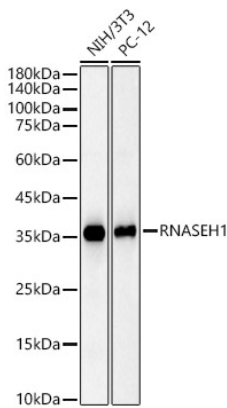
Store at -20°C. Avoid freeze / thaw cycles.

Buffer: PBS with 0.09% sodium azide, 0.05% BSA, 50% glycerol, pH7.3

## Validation Data



Western blot analysis of lysates from Jurkat cells, using RNASEH1 Mouse mAb (A22956) at 1:1000 dilution.  
Secondary antibody: HRP-conjugated Goat anti-Mouse IgG (H+L) (AS003) at 1:10000 dilution.  
Lysates/proteins: 25µg per lane.  
Blocking buffer: 3% nonfat dry milk in TBST.  
Detection: ECL Enhanced Kit (RM00021).  
Exposure time: 180s.



Western blot analysis of various lysates, using RNASEH1 Mouse mAb (A22956) at 1:1000 dilution.  
Secondary antibody: HRP-conjugated Goat anti-Mouse IgG (H+L) (AS003) at 1:10000 dilution.  
Lysates/proteins: 25µg per lane.  
Blocking buffer: 3% nonfat dry milk in TBST.  
Detection: ECL Enhanced Kit (RM00021).  
Exposure time: 60s.