

Pan-Actin Rabbit mAb

Catalog No.: A22935 **Recombinant**

Basic Information

Observed MW

42kDa

Calculated MW

41kDa

Category

Primary antibody

Applications

WB,ELISA

Cross-Reactivity

Human, Mouse, Rat

CloneNo number

ARC3181

Background

Actins are highly conserved proteins that are involved in various types of cell motility, and maintenance of the cytoskeleton. In vertebrates, three main groups of actin isoforms, alpha, beta and gamma have been identified. The alpha actins are found in muscle tissues and are a major constituent of the contractile apparatus. The beta and gamma actins co-exist in most cell types as components of the cytoskeleton, and as mediators of internal cell motility. Actin, gamma 1, encoded by this gene, is a cytoplasmic actin found in non-muscle cells. Mutations in this gene are associated with DFNA20/26, a subtype of autosomal dominant non-syndromic sensorineural progressive hearing loss. Alternative splicing results in multiple transcript variants.

Recommended Dilutions

WB 1:50 - 1:200

ELISA Recommended starting concentration is 1 µg/mL. Please optimize the concentration based on your specific assay requirements.

Immunogen Information

Gene ID

60/58/71/70/59/72

Swiss Prot

P60709/P68133/P63261/P68032/P62736/P63267

Immunogen

Synthetic peptide. This information is considered to be commercially sensitive.

Synonyms

Pan-Actin; ACT; ACTG; BRWS2; DFNA20; DFNA26; HEL-176; actin gamma 1

Contact

☎ | 400-999-6126

✉ | cn.market@abclonal.com.cn

🌐 | www.abclonal.com.cn

Product Information

Source

Rabbit

Isotype

IgG

Purification

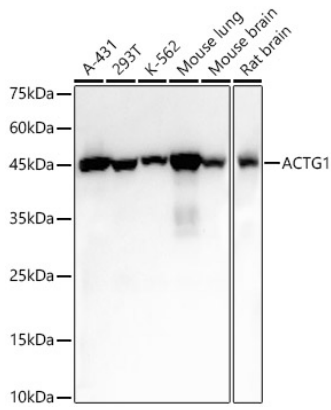
Affinity purification

Storage

Store at -20°C. Avoid freeze / thaw cycles.

Buffer: 10 mM sodium HEPES and 150 mM NaCl with proclin300 or sodium azide (as specified on the Certificate of Analysis), 100 µg/ml BSA, 50% Glycerol, pH 7.5

Validation Data



Western blot analysis of various lysates, using Pan-Actin Rabbit mAb (A22935) at 1:200 dilution.
Secondary antibody: HRP-conjugated Goat anti-Rabbit IgG (H+L) (AS014) at 1:10000 dilution.
Lysates/proteins: 25µg per lane.
Blocking buffer: 3% nonfat dry milk in TBST.
Detection: ECL Enhanced Kit (RM00021).
Exposure time: 1s.