

Abhd6 Rabbit mAb

Catalog No.: A22933 **Recombinant**

Basic Information

Observed MW

36kDa

Calculated MW

38kDa

Category

Primary antibody

Applications

WB,ELISA

Cross-Reactivity

Human, Mouse, Rat

CloneNo number

ARC3157

Background

Enables acylglycerol lipase activity and phospholipase activity. Involved in several processes, including monoacylglycerol catabolic process; negative regulation of cold-induced thermogenesis; and phospholipid metabolic process. Acts upstream of or within long-term synaptic depression; negative regulation of cell migration; and regulation of endocannabinoid signaling pathway. Located in late endosome membrane; lysosomal membrane; and mitochondrion. Is integral component of postsynaptic membrane. Part of AMPA glutamate receptor complex. Is active in GABA-ergic synapse and glutamatergic synapse. Orthologous to human ABHD6 (abhydrolase domain containing 6, acylglycerol lipase).

Recommended Dilutions

WB 1:500 - 1:1000**ELISA** Recommended starting concentration is 1 µg/mL. Please optimize the concentration based on your specific assay requirements.

Immunogen Information

Gene ID

66082

Swiss Prot

Q8R2Y0

Immunogen

Synthetic peptide. This information is considered to be commercially sensitive.

Synonyms

0610041D24Rik; Abhd6

Contact

 | 400-999-6126 | cn.market@abclonal.com.cn | www.abclonal.com.cn

Product Information

Source

Rabbit

Isotype

IgG

Purification

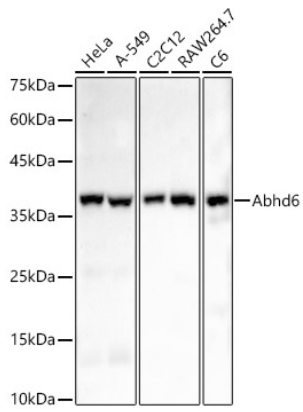
Affinity purification

Storage

Store at -20°C. Avoid freeze / thaw cycles.

Buffer: 10 mM sodium HEPES and 150 mM NaCl with proclin300 or sodium azide (as specified on the Certificate of Analysis), 100 µg/ml BSA, 50% Glycerol, pH 7.5

Validation Data



Western blot analysis of various lysates, using Abhd6 Rabbit mAb (A22933) at 1:1000 dilution.
Secondary antibody: HRP-conjugated Goat anti-Rabbit IgG (H+L) (AS014) at 1:10000 dilution.
Lysates/proteins: 25µg per lane.
Blocking buffer: 3% nonfat dry milk in TBST.
Detection: ECL Basic Kit (RM00020).
Exposure time: 60s.