

# FITC Mouse IgG2b isotype control

**Catalog No.: A22883**

## Basic Information

---

### Observed MW

Refer to figures

### Calculated MW

### Category

Primary antibody

### Applications

FC

### Cross-Reactivity

### CloneNo number

AMC0555

### Conjugate

FITC. Ex:491nm. Em:516nm.

## Background

---

## Recommended Dilutions

---

FC 10  $\mu$ L/Test

## Immunogen Information

---

### Gene ID

### Swiss Prot

### Immunogen

Recombinant protein (or fragment). This information is considered to be commercially sensitive.

### Synonyms

## Contact

---

☎ | 400-999-6126

✉ | [cn.market@abclonal.com.cn](mailto:cn.market@abclonal.com.cn)

🌐 | [www.abclonal.com.cn](http://www.abclonal.com.cn)

## Product Information

---

### Source

Mouse

### Isotype

Mouse IgG2b

### Purification

Affinity purification

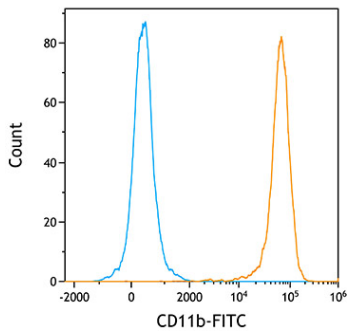
### Storage

Store at 4°C. Avoid freeze / thaw cycles.

Buffer: PBS with 0.1% Proclin300, 0.2% BSA, pH7.2.

## Validation Data

---



Flow cytometry:  $1 \times 10^6$  Human PBMC were surface-stained with FITC Mouse anti-Human CD11b mAb (A22808, orange line) or FITC Mouse IgG2b isotype control mAb (A22883, blue line).