

HSPA14 Rabbit mAb

Catalog No.: A2286 **Recombinant**

Basic Information

Observed MW

55kDa

Calculated MW

55kDa

Category

Primary antibody

Applications

WB, IHC-P, IF/ICC, ELISA

Cross-Reactivity

Human, Mouse

CloneNo number

ARC1908

Background

Predicted to enable several functions, including ATP binding activity; misfolded protein binding activity; and unfolded protein binding activity. Predicted to be involved in several processes, including cellular response to unfolded protein; chaperone cofactor-dependent protein refolding; and protein refolding. Located in cytosol. Colocalizes with ribosome.

Recommended Dilutions

WB 1:1000 - 1:6000

IHC-P 1:100 - 1:400

IF/ICC 1:100 - 1:1000

ELISA Recommended starting concentration is 1 µg/mL. Please optimize the concentration based on your specific assay requirements.

Immunogen Information

Gene ID

51182

Swiss Prot

Q0VDF9

Immunogen

Synthetic peptide. This information is considered to be commercially sensitive.

Synonyms

HSP70-4; HSP70L1; MSANTD7; HSPA14

Contact

☎ | 400-999-6126

✉ | cn.market@abclonal.com.cn

🌐 | www.abclonal.com.cn

Product Information

Source

Rabbit

Isotype

IgG

Purification

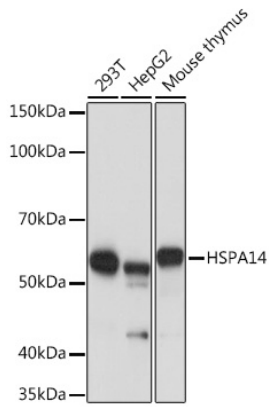
Affinity purification

Storage

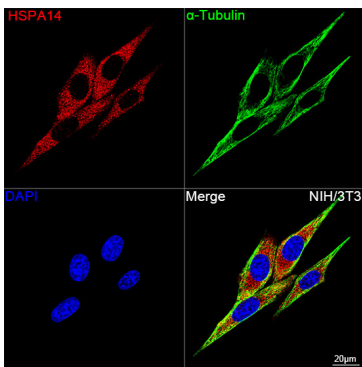
Store at -20°C. Avoid freeze / thaw cycles.

Buffer: PBS containing 50% glycerol and 0.05% BSA, preserved with proclin300 or sodium azide (as specified on the Certificate of Analysis), pH 7.3.

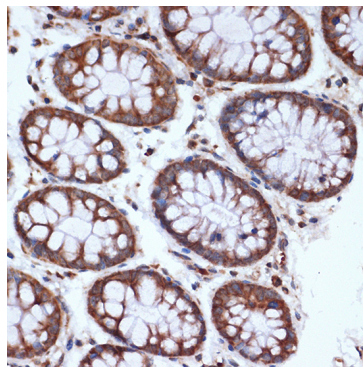
Validation Data



Western blot analysis of various lysates using HSPA14 Rabbit mAb (A2286) at 1:1000 dilution. Secondary antibody: HRP-conjugated Goat anti-Rabbit IgG (H+L) (AS014) at 1:10000 dilution. Lysates/proteins: 25µg per lane. Blocking buffer: 3% nonfat dry milk in TBST. Detection: ECL Basic Kit (RM00020). Exposure time: 1s.



Confocal imaging of NIH/3T3 cells using HSPA14 Rabbit mAb (A2286, dilution 1:100) followed by a further incubation with Cy3 Goat Anti-Rabbit IgG (H+L) (AS007, dilution 1:500) (Red). The cells were counterstained with alpha-Tubulin Mouse mAb (AC012, dilution 1:400) followed by incubation with ABflo® 488-conjugated Goat Anti-Mouse IgG (H+L) Ab (AS076, dilution 1:500) (Green). DAPI was used for nuclear staining (Blue). Objective: 100x.



Immunohistochemistry analysis of paraffin-embedded Human colon using HSPA14 Rabbit mAb (A2286) at dilution of 1:100 (40x lens). Microwave antigen retrieval performed with 0.01M Tris/EDTA Buffer (pH 9.0) prior to IHC staining.