

# FITC Mouse anti-Human CD18 mAb

**Catalog No.: A22814**

## Basic Information

### Observed MW

Refer to figures

### Calculated MW

85kDa

### Category

Primary antibody

### Applications

FC

### Cross-Reactivity

Human

### CloneNo number

AMC0540

### Conjugate

FITC. Ex:491nm. Em:516nm.

## Recommended Dilutions

**FC** 10 µL/Test

## Background

This gene encodes an integrin beta chain, which combines with multiple different alpha chains to form different integrin heterodimers. Integrins are integral cell-surface proteins that participate in cell adhesion as well as cell-surface mediated signalling. The encoded protein plays an important role in immune response and defects in this gene cause leukocyte adhesion deficiency. Alternative splicing results in multiple transcript variants.

## Immunogen Information

### Gene ID

3689

### Swiss Prot

P05107


### Immunogen

Recombinant protein (or fragment). This information is considered to be commercially sensitive.

### Synonyms

LAD; CD18; MF17; MFI7; LCAMB; LFA-1; MAC-1

## Contact

 | 400-999-6126

 | [cn.market@abclonal.com.cn](mailto:cn.market@abclonal.com.cn)

 | [www.abclonal.com.cn](http://www.abclonal.com.cn)

## Product Information

### Source

Mouse

### Isotype

IgG1

### Purification

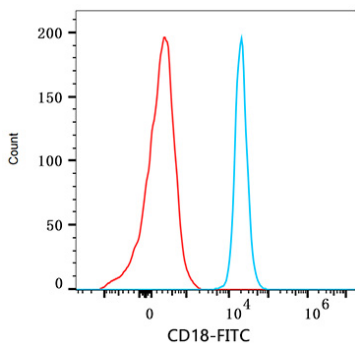
Affinity purification

### Storage

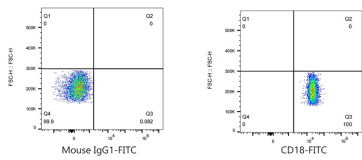
Store at 4°C. Avoid freeze / thaw cycles.

Buffer: PBS containing 0.2% BSA, preserved with proclin300 or sodium azide (as specified on the Certificate of Analysis), pH 7.2.

# Validation Data



Flow cytometry:1X10<sup>6</sup> Human PBMC were surface-stained with FITC Mouse anti-Human CD18 mAb (A22814, red line) or FITC Mouse IgG1 isotype control mAb (A22877, blue line).



Flow cytometry:1X10<sup>6</sup> Human PBMC were surface-stained with FITC Mouse IgG1 isotype control mAb (A22877, left) or FITC Mouse anti-Human CD18 mAb (A22814, right).