

# PerCP Mouse anti-Human CD3 mAb

Catalog No.: A22796

## Basic Information

### Observed MW

Refer to figures

### Calculated MW

23kDa

### Category

Primary antibody

### Applications

FC

### Cross-Reactivity

Human

### CloneNo number

AMC0533

### Conjugate

PerCP. Ex:482nm. Em:678nm.

## Recommended Dilutions

FC 10 µL/Test

## Background

The protein encoded by this gene is the CD3-epsilon polypeptide, which together with CD3-gamma, -delta and -zeta, and the T-cell receptor alpha/beta and gamma/delta heterodimers, forms the T-cell receptor-CD3 complex. This complex plays an important role in coupling antigen recognition to several intracellular signal-transduction pathways. The genes encoding the epsilon, gamma and delta polypeptides are located in the same cluster on chromosome 11. The epsilon polypeptide plays an essential role in T-cell development. Defects in this gene cause immunodeficiency. This gene has also been linked to a susceptibility to type I diabetes in women.

## Immunogen Information

### Gene ID

916

### Swiss Prot

P07766

### Immunogen

Recombinant protein (or fragment). This information is considered to be commercially sensitive.

### Synonyms

T3E; TCRE; IMD18; CD3epsilon

## Contact

☎ | 400-999-6126

✉ | [cn.market@abclonal.com.cn](mailto:cn.market@abclonal.com.cn)

🌐 | [www.abclonal.com.cn](http://www.abclonal.com.cn)

## Product Information

### Source

Mouse

### Isotype

IgG1

### Purification

Affinity purification

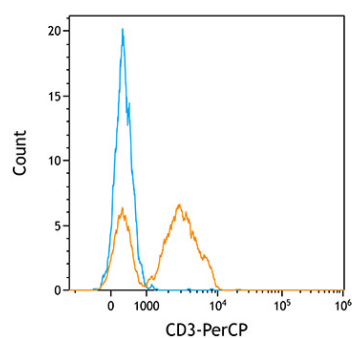
### Storage

Store at 4°C. Avoid freeze / thaw cycles.

Buffer: PBS containing 0.2% BSA, preserved with proclin300 or sodium azide (as specified on the Certificate of Analysis), pH 7.2.

## Validation Data

---



Flow cytometry:  $1 \times 10^6$  Human PBMC were surface-stained with PerCP Mouse anti-Human CD3 mAb (A22796, orange line) or isotype control mAb (blue line).