

ABF1 Rabbit pAb

Catalog No.: A22789

Basic Information

Observed MW

Calculated MW

39kDa

Category

Primary antibody

Applications

WB, ELISA

Cross-Reactivity

Arabidopsis thaliana

Background

Identified as a protein that binds to abscisic acid response elements. May mediate transcriptional regulation of ABA responses.

Recommended Dilutions

WB 1:500 - 1:1000

ELISA Recommended starting concentration is 1 µg/mL. Please optimize the concentration based on your specific assay requirements.

Immunogen Information

Gene ID

841395

Swiss Prot

Q8L3W1

Immunogen

Recombinant protein (or fragment). This information is considered to be commercially sensitive.

Synonyms

abscisic acid responsive element-binding factor 1; AtABF1; F14J22.7; F14J22_7; ABF1

Contact

 | 400-999-6126

 | cn.market@abclonal.com.cn

 | www.abclonal.com.cn

Product Information

Source

Rabbit

Isotype

IgG

Purification

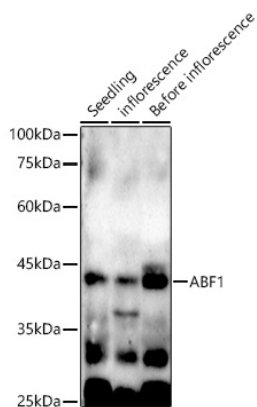
Affinity purification

Storage

Store at -20°C. Avoid freeze / thaw cycles.

Buffer: Buffer: PBS containing 50% glycerol, preserved with proclin300 or sodium azide (as specified on the Certificate of Analysis), pH 7.3.

Validation Data



Western blot analysis of various tissues from *Arabidopsis thaliana*, using ABF1 Rabbit pAb (A22789) at 1:600 dilution.

Secondary antibody: HRP-conjugated Goat anti-Rabbit IgG (H+L) (AS014) at 1:10000 dilution.

Lysates/proteins: 25µg per lane.

Blocking buffer: 3% nonfat dry milk in TBST.

Detection: ECL Basic Kit (RM00020).

Exposure time: 180s.