

ABflo® 647 Rabbit anti-Human TNF-α mAb

Catalog No.: A22782

Basic Information

Observed MW

Calculated MW

26kDa

Category

Primary antibody

Applications

FC (intra)

Cross-Reactivity

Human

CloneNo number

ARC58925

Conjugate

ABflo® 647. Ex:648nm. Em:664nm.

Background

This gene encodes a multifunctional proinflammatory cytokine that belongs to the tumor necrosis factor (TNF) superfamily. This cytokine is mainly secreted by macrophages. It can bind to, and thus functions through its receptors TNFRSF1A/TNFR1 and TNFRSF1B/TNFR. This cytokine is involved in the regulation of a wide spectrum of biological processes including cell proliferation, differentiation, apoptosis, lipid metabolism, and coagulation. This cytokine has been implicated in a variety of diseases, including autoimmune diseases, insulin resistance, psoriasis, rheumatoid arthritis ankylosing spondylitis, tuberculosis, autosomal dominant polycystic kidney disease, and cancer. Mutations in this gene affect susceptibility to cerebral malaria, septic shock, and Alzheimer disease. Knockout studies in mice also suggested the neuroprotective function of this cytokine.

Recommended Dilutions

FC (intra) 5 µl per 10⁶ cells in
100 µl volume

Immunogen Information

Gene ID

7124

Swiss Prot

P01375

Immunogen

Recombinant protein (or fragment). This information is considered to be commercially sensitive.

Synonyms

DIF; TNFA; TNFSF2; TNLG1F; TNF-alpha

Contact

☎ | 400-999-6126

✉ | cn.market@abclonal.com.cn

🌐 | www.abclonal.com.cn

Product Information

Source

Rabbit

Isotype

IgG

Purification

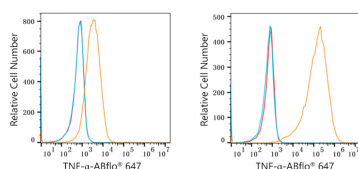
Affinity purification

Storage

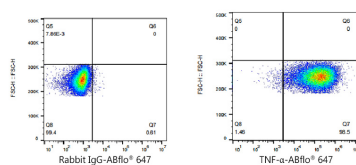
Store at 2-8°C. Avoid freeze.

Buffer: PBS containing 0.2% BSA, preserved with proclin300 or sodium azide (as specified on the Certificate of Analysis), pH 7.3.

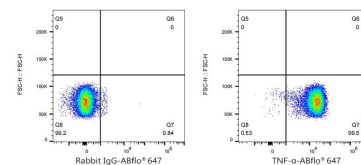
Validation Data



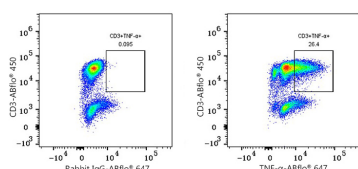
Flow cytometry: 1×10^6 293F cells (negative control, Left) and 293F (Transfection, right) cells were intracellularly-stained with ABflo® 647 Rabbit anti-Human TNF- α mAb (A22782, 5 μ l/Test, orange line) or ABflo® 647 Rabbit IgG isotype control (A22070, 5 μ l/Test, blue line). Non-fluorescently stained cells were used as blank control (red line).



Flow cytometry: 1×10^6 293F (Transfection) cells were intracellularly-stained with ABflo® 647 Rabbit IgG isotype control (A22070, 5 μ l/Test, left) or ABflo® 647 Rabbit anti-Human TNF- α mAb (A22782, 5 μ l/Test, right).



Flow cytometry: 1×10^6 Human PBMC were intracellularly-stained with ABflo® 647 Rabbit IgG isotype control (A22070, 5 μ l/Test, left) or ABflo® 647 Rabbit anti-Human TNF- α mAb (A22782, 5 μ l/Test, right).



Flow cytometry: 1×10^6 Human PBMC (treated with 50 ng/ml PMA and 1 μ g/ml Ionomycin in the presence of 1 μ g/ml Brefeldin A for 4 hours) were surface-stained with ABflo® 450 Rabbit anti-Human CD3 mAb (A27177, 5 μ l/Test) and then intracellularly-stained with ABflo® 647 Rabbit IgG isotype control (A22070, 5 μ l/Test, left) or ABflo® 647 Rabbit anti-Human TNF- α mAb (A22782, 5 μ l/Test, right). Cells in the lymphocyte and monocyte gates were used for analysis.