

ABflo® 488 Rabbit anti-Human/Mouse Integrin alpha 5 (ITGA5/CD49e) mAb

Catalog No.: A22771

Basic Information

Observed MW

Calculated MW
115kDa

Category
Primary antibody

Applications
FC

Cross-Reactivity
Human, Mouse

CloneNo number
ARC58294

Conjugate
ABflo® 488. Ex:491nm. Em:516nm.

Background

The product of this gene belongs to the integrin alpha chain family. Integrins are heterodimeric integral membrane proteins composed of an alpha subunit and a beta subunit that function in cell surface adhesion and signaling. The encoded preproprotein is proteolytically processed to generate light and heavy chains that comprise the alpha 5 subunit. This subunit associates with the beta 1 subunit to form a fibronectin receptor. This integrin may promote tumor invasion, and higher expression of this gene may be correlated with shorter survival time in lung cancer patients. Note that the integrin alpha 5 and integrin alpha V subunits are encoded by distinct genes.

Recommended Dilutions

FC 5 µl per 10⁶ cells in
100 µl volume

Immunogen Information

Gene ID 3678	Swiss Prot P08648
------------------------	-----------------------------

Immunogen

Recombinant protein (or fragment). This information is considered to be commercially sensitive.

Synonyms

FNRA; CD49e; VLA-5; VLA5A

Contact

☎		400-999-6126
✉		cn.market@abclonal.com.cn
🌐		www.abclonal.com.cn

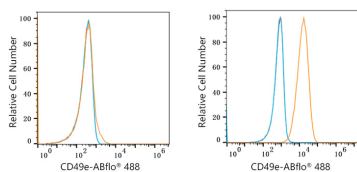
Product Information

Source Rabbit	Isotype IgG	Purification Affinity purification
-------------------------	-----------------------	--

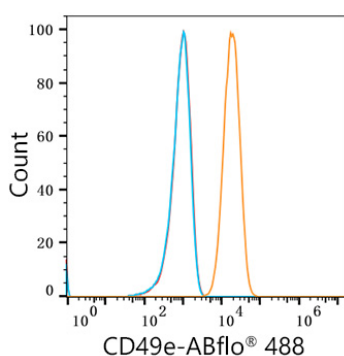
Storage

Store at 2-8°C. Avoid freeze.
Buffer: PBS containing 0.2% BSA, preserved with proclin300 or sodium azide (as specified on the Certificate of Analysis), pH 7.3.

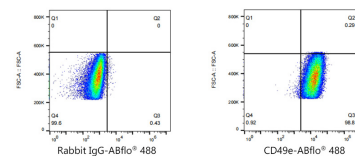
Validation Data



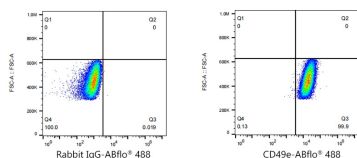
Flow cytometry: 1×10^6 SH-SY5Y cells (negative control, Left) and U-87MG cells (Right) were surface-stained with ABflo® 488 Rabbit anti-Human/Mouse Integrin alpha 5 (ITGA5/CD49e) mAb (A22771, 5 μ l/Test, orange line) or ABflo® 488 Rabbit IgG isotype control (A22069, 5 μ l/Test, blue line). Non-fluorescently stained cells were used as blank control (red line).



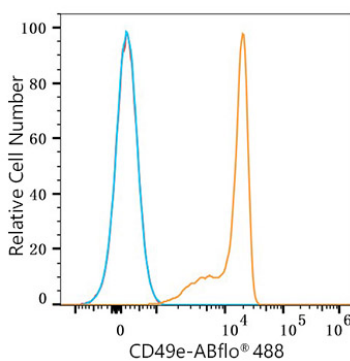
Flow cytometry: 1×10^6 NIH/3T3 cells were surface-stained with ABflo® 488 Rabbit anti-Human/Mouse Integrin alpha 5 (ITGA5/CD49e) mAb (A22771, 5 μ l/Test, orange line) or ABflo® 488 Rabbit IgG isotype control (A22069, 5 μ l/Test, blue line). Non-fluorescently stained NIH/3T3 cells was used as blank control (red line).



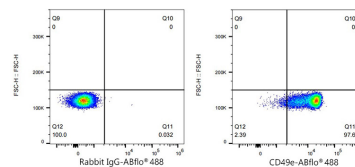
Flow cytometry: 1×10^6 U-87MG cells were surface-stained with ABflo® 488 Rabbit IgG isotype control (A22069, 5 μ l/Test, left) or ABflo® 488 Rabbit anti-Human/Mouse Integrin alpha 5 (ITGA5/CD49e) mAb (A22771, 5 μ l/Test, right).



Flow cytometry: 1×10^6 NIH/3T3 cells were surface-stained with ABflo® 488 Rabbit IgG isotype control (A22069, 5 μ l/Test, left) or ABflo® 488 Rabbit anti-Human/Mouse Integrin alpha 5 (ITGA5/CD49e) mAb (A22771, 5 μ l/Test, right).



Flow cytometry: 1×10^6 Human PBMC were surface-stained with ABflo® 488 Rabbit anti-Human Integrin alpha 5 (ITGA5/CD49e) mAb (A22771, 5 μ l/Test, orange line) or ABflo® 488 Rabbit IgG isotype control (A22069, 5 μ l/Test, blue line). Non-fluorescently stained cells were used as blank control (red line).



Flow cytometry: 1×10^6 Human PBMC were surface-stained with ABflo® 488 Rabbit IgG isotype control (A22069, 5 μ l/Test, left) or ABflo® 488 Rabbit anti-Human Integrin alpha 5 (ITGA5/CD49e) mAb (A22771, 5 μ l/Test, right).