

# IFN-beta Rabbit mAb

Catalog No.: A22740

Recombinant

2 Publications

## Basic Information

### Observed MW

63kDa (C-hFc&His tagged Active Recombinant Mouse IFN-beta Protein) 24kDa/26kDa(Endogenous)

### Calculated MW

22kDa

### Category

Primary antibody

### Applications

ELISA, WB

### Cross-Reactivity

Mouse

### CloneNo number

ARC58590

## Background

Enables cytokine activity and type I interferon receptor binding activity. Involved in B cell proliferation; cellular response to virus; and type I interferon signaling pathway. Acts upstream of or within several processes, including cellular response to organic cyclic compound; defense response to other organism; and negative regulation of osteoclast differentiation. Located in extracellular space. Is expressed in embryo and liver. Human ortholog(s) of this gene implicated in COVID-19. Orthologous to human IFNB1 (interferon beta 1).

## Recommended Dilutions

WB 1:2000 - 1:7000

## Immunogen Information

### Gene ID

15977

### Swiss Prot

P01575

### Immunogen

Recombinant fusion protein containing a sequence corresponding to amino acids 1-182 of mouse IFN-beta (NP\_034640.1)

### Synonyms

Ifb; IFNB; If1da1; IFN-beta

## Contact

☎ | 400-999-6126

✉ | [cn.market@abclonal.com.cn](mailto:cn.market@abclonal.com.cn)

🌐 | [www.abclonal.com.cn](http://www.abclonal.com.cn)

## Product Information

### Source

Rabbit

### Isotype

IgG

### Purification

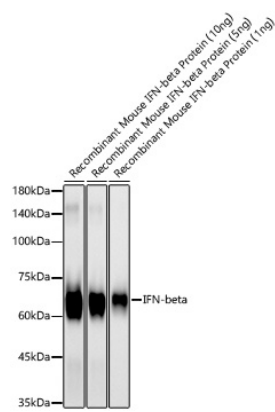
Affinity purification

### Storage

Store at -20°C. Avoid freeze / thaw cycles.

Buffer: PBS with 0.05% proclin300, 0.05% BSA, 50% glycerol, pH7.3.

# Validation Data



Western blot analysis of recombinant Mouse IFN-beta Protein using IFN-beta Rabbit mAb (A22740) at 1:6000 dilution.  
Secondary antibody: HRP Goat Anti-Rabbit IgG (H+L) (AS014) at 1:10000 dilution.  
Lysates/proteins: 10ng/5ng/1ng per lane.  
Blocking buffer: 3% nonfat dry milk in TBST.  
Detection: ECL Basic Kit (RM00020).  
Exposure time: 30s.