

KAT2B/PCAF Rabbit mAb

Catalog No.: A22719

Recombinant

2 Publications

Basic Information

Observed MW

100 kDa

Calculated MW

93 kDa

Category

Primary antibody

Applications

WB, IP, IHC-P, ELISA

Cross-Reactivity

Human, Mouse, Rat

CloneNo number

ARC55963

Background

CBP and p300 are large nuclear proteins that bind to many sequence-specific factors involved in cell growth and/or differentiation, including c-jun and the adenoviral oncoprotein E1A. The protein encoded by this gene associates with p300/CBP. It has in vitro and in vivo binding activity with CBP and p300, and competes with E1A for binding sites in p300/CBP. It has histone acetyl transferase activity with core histones and nucleosome core particles, indicating that this protein plays a direct role in transcriptional regulation.

Recommended Dilutions

WB 1:1000 - 1:4000**IP** 0.5µg-4µg antibody for
400µg-600µg extracts of
whole cells**IHC-P** 1:200 - 1:2000**ELISA** Recommended starting
concentration is 1 µg/mL.
Please optimize the
concentration based on
your specific assay
requirements.

Immunogen Information

Gene ID

8850

Swiss Prot

Q92831

Immunogen

Recombinant protein (or fragment). This information is considered to be commercially sensitive.

Synonyms

CAF; PCAF; P/CAF; KAT2B/PCAF

Product Information

Source

Rabbit

Isotype

IgG

Purification

Affinity purification

Storage

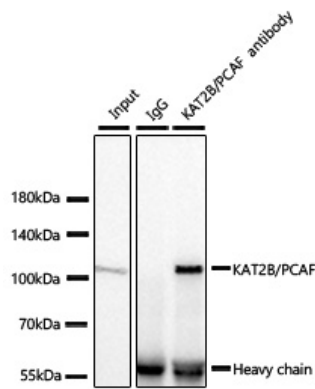
Store at -20°C. Avoid freeze / thaw cycles.

Buffer: PBS containing 50% glycerol and 0.05% BSA, preserved with proclin300 or sodium azide (as specified on the Certificate of Analysis), pH 7.3.

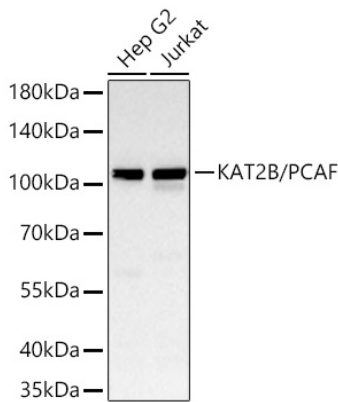
Contact

 | 400-999-6126 | cn.market@abclonal.com.cn | www.abclonal.com.cn

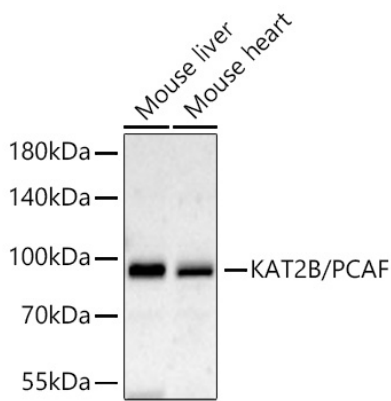
Validation Data



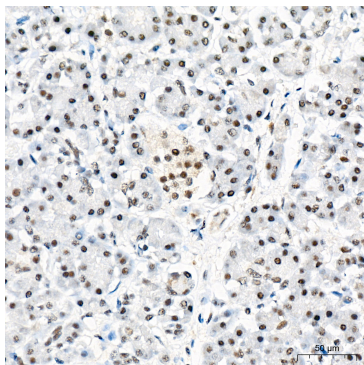
Immunoprecipitation of KAT2B/PCAF from 600 µg extracts of Hep G2 cells was performed using 2 µg of KAT2B/PCAF Rabbit mAb (A22719). Rabbit Control IgG (AC005) was used to precipitate the Control IgG sample. IP samples were eluted with 1X Laemmli Buffer. The Input lane represents 10% of the total input. Western blot analysis of immunoprecipitates was conducted using KAT2B/PCAF Rabbit mAb (A22719) at a dilution of 1:1000.



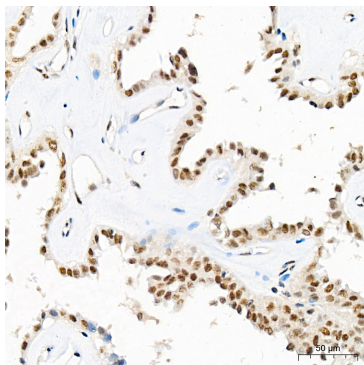
Western blot analysis of various lysates using KAT2B/PCAF Rabbit mAb (A22719) at 1:1000 dilution incubated at room temperature for 1.5 hours.
Secondary antibody: HRP-conjugated Goat anti-Rabbit IgG (H+L) (AS014) at 1:10000 dilution.
Lysates/proteins: 25 µg per lane.
Blocking buffer: 3% nonfat dry milk in TBST.
Detection: ECL Basic Kit (RM00020).
Exposure time: 30s.



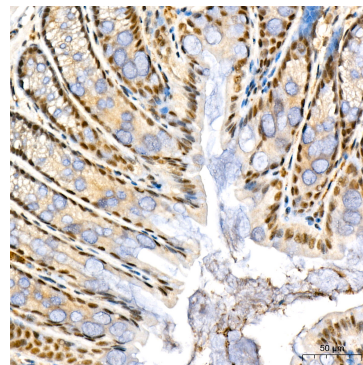
Western blot analysis of various lysates using KAT2B/PCAF Rabbit mAb (A22719) at 1:1000 dilution incubated at room temperature for 1.5 hours.
Secondary antibody: HRP-conjugated Goat anti-Rabbit IgG (H+L) (AS014) at 1:10000 dilution.
Lysates/proteins: 25 µg per lane.
Blocking buffer: 3% nonfat dry milk in TBST.
Detection: ECL Basic Kit (RM00020).
Exposure time: 90s.



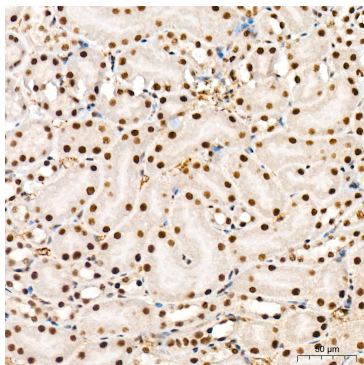
Immunohistochemistry analysis of paraffin-embedded Human pancreas tissue using KAT2B/PCAF Rabbit mAb (A22719) at a dilution of 1:200 (40x lens). High pressure antigen retrieval was performed with 0.01 M citrate buffer (pH 6.0) prior to IHC staining.



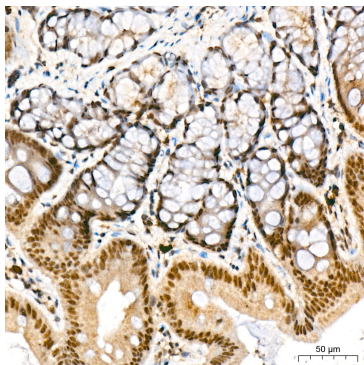
Immunohistochemistry analysis of paraffin-embedded Human thyroid tissue using KAT2B/PCAF Rabbit mAb (A22719) at a dilution of 1:200 (40x lens). High pressure antigen retrieval was performed with 0.01 M citrate buffer (pH 6.0) prior to IHC staining.



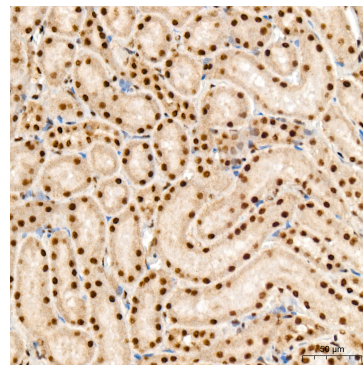
Immunohistochemistry analysis of paraffin-embedded Mouse colon tissue using KAT2B/PCAF Rabbit mAb (A22719) at a dilution of 1:200 (40x lens). High pressure antigen retrieval was performed with 0.01 M citrate buffer (pH 6.0) prior to IHC staining.



Immunohistochemistry analysis of paraffin-embedded Mouse kidney tissue using KAT2B/PCAF Rabbit mAb (A22719) at a dilution of 1:200 (40x lens). High pressure antigen retrieval was performed with 0.01 M citrate buffer (pH 6.0) prior to IHC staining.



Immunohistochemistry analysis of paraffin-embedded Rat colon tissue using KAT2B/PCAF Rabbit mAb (A22719) at a dilution of 1:200 (40x lens). High pressure antigen retrieval was performed with 0.01 M citrate buffer (pH 6.0) prior to IHC staining.



Immunohistochemistry analysis of paraffin-embedded Rat kidney tissue using KAT2B/PCAF Rabbit mAb (A22719) at a dilution of 1:200 (40x lens). High pressure antigen retrieval was performed with 0.01 M citrate buffer (pH 6.0) prior to IHC staining.