

ABflo® 488 Rabbit anti-Human E-Cadherin/CD324 mAb**Catalog No.: A22692****Basic Information****Observed MW**

Refer to figures

Calculated MW

90kDa/97kDa

Category

Primary antibody

Applications

FC

Cross-Reactivity

Human

CloneNo number

ARC57098

Conjugate

ABflo® 488. Ex:491nm. Em:516nm.

Recommended Dilutions**FC** 5 µl per 10⁶ cells in
100 µl volume**Background**

This gene encodes a classical cadherin of the cadherin superfamily. Alternative splicing results in multiple transcript variants, at least one of which encodes a preproprotein that is proteolytically processed to generate the mature glycoprotein. This calcium-dependent cell-cell adhesion protein is comprised of five extracellular cadherin repeats, a transmembrane region and a highly conserved cytoplasmic tail. Mutations in this gene are correlated with gastric, breast, colorectal, thyroid and ovarian cancer. Loss of function of this gene is thought to contribute to cancer progression by increasing proliferation, invasion, and/or metastasis. The ectodomain of this protein mediates bacterial adhesion to mammalian cells and the cytoplasmic domain is required for internalization. This gene is present in a gene cluster with other members of the cadherin family on chromosome 16.

Immunogen Information**Gene ID**

999

Swiss Prot


P12830

Immunogen

Recombinant protein (or fragment). This information is considered to be commercially sensitive.

Synonyms

UVO; CDHE; ECAD; LCAM; Arc-1; BCDS1; CD324

Contact | 400-999-6126 | cn.market@abclonal.com.cn | www.abclonal.com.cn**Product Information****Source**

Rabbit

Isotype

IgG

Purification

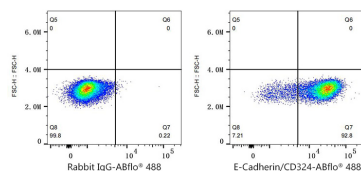
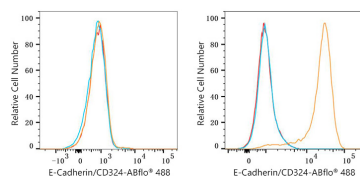
Affinity purification

Storage

Store at 2-8°C. Avoid freeze.

Buffer: PBS containing 0.2% BSA, preserved with proclin300 or sodium azide (as specified on the Certificate of Analysis), pH 7.3.

Validation Data



Flow cytometry: 1×10^6 K-562 cells (negative control, Left) and A431 cells (right) were surface-stained with ABflo® 488 Rabbit anti-Human E-Cadherin/CD324 mAb (A22692, 5 μ l/Test, orange line) or ABflo® 488 Rabbit IgG isotype control (A22069, 5 μ l/Test, blue line). Non-fluorescently stained cells were used as blank control (red line).

Flow cytometry: 1×10^6 A431 cells were surface-stained with ABflo® 488 Rabbit IgG isotype control (A22069, 5 μ l/Test, left) or ABflo® 488 Rabbit anti-Human E-Cadherin/CD324 mAb (A22692, 5 μ l/Test, right).