

ABflo® 488 Rabbit anti-Human ITGA1/CD49a mAb

Catalog No.: A22691

Basic Information

Observed MW

Calculated MW

131kDa

Category

Primary antibody

Applications

FC

Cross-Reactivity

Human

CloneNo number

ARC58076

Conjugate

ABflo® 488. Ex:491nm. Em:516nm.

Background

This gene encodes the alpha 1 subunit of integrin receptors. This protein heterodimerizes with the beta 1 subunit to form a cell-surface receptor for collagen and laminin. The heterodimeric receptor is involved in cell-cell adhesion and may play a role in inflammation and fibrosis. The alpha 1 subunit contains an inserted (I) von Willebrand factor type I domain which is thought to be involved in collagen binding.

Recommended Dilutions

FC 5 µl per 10⁶ cells in
100 µl volume

Immunogen Information

Gene ID

3672

Swiss Prot

P56199

Immunogen

Recombinant protein (or fragment). This information is considered to be commercially sensitive.

Synonyms

VLA1; CD49a

Contact

 | 400-999-6126

 | cn.market@abclonal.com.cn

 | www.abclonal.com.cn

Product Information

Source

Rabbit

Isotype

IgG

Purification

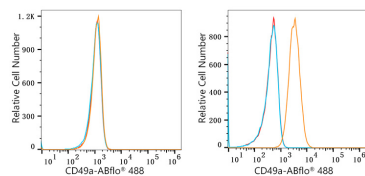
Affinity purification

Storage

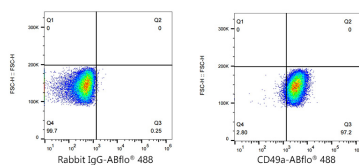
Store at 2-8°C. Avoid freeze.

Buffer: PBS containing 0.2% BSA, preserved with proclin300 or sodium azide (as specified on the Certificate of Analysis), pH 7.3.

Validation Data



Flow cytometry: 1×10^6 K-562 cells (negative control, Left) and SH-SY5Y cells (Right) were surface-stained with ABflo® 488 Rabbit anti-Human ITGA1/CD49a mAb (A22691, 5 μ l/Test, orange line) or ABflo® 488 Rabbit IgG isotype control (A22069, 5 μ l/Test, blue line). Non-fluorescently stained cells were used as blank control (red line).



Flow cytometry: 1×10^6 SH-SY5Y cells were surface-stained with ABflo® 488 Rabbit IgG isotype control (A22069, 5 μ l/Test, left) or ABflo® 488 Rabbit anti-Human ITGA1/CD49a mAb (A22691, 5 μ l/Test, right).