

ABflo® 647 Rabbit anti-Human/Mouse PDGFR α /CD140a mAb

Catalog No.: A22690 **1 Publications**

Basic Information

Observed MW

Refer to figures

Calculated MW

24kDa/82kDa/123kDa

Category

Primary antibody

Applications

FC

Cross-Reactivity

Human, Mouse

CloneNo number

ARC56217

Conjugate

ABflo® 647. Ex:648nm. Em:664nm.

Recommended Dilutions

FC 5 μ l per 10⁶ cells in
100 μ l volume

Background

This gene encodes a cell surface tyrosine kinase receptor for members of the platelet-derived growth factor family. These growth factors are mitogens for cells of mesenchymal origin. The identity of the growth factor bound to a receptor monomer determines whether the functional receptor is a homodimer or a heterodimer, composed of both platelet-derived growth factor receptor alpha and beta polypeptides. Studies suggest that this gene plays a role in organ development, wound healing, and tumor progression. Mutations in this gene have been associated with idiopathic hypereosinophilic syndrome, somatic and familial gastrointestinal stromal tumors, and a variety of other cancers.

Immunogen Information

Gene ID

5156

Swiss Prot

P16234

Immunogen

Recombinant protein (or fragment). This information is considered to be commercially sensitive.


Synonyms

CD140A; PDGFR2; PDGFR-2

Contact

 | 400-999-6126

 | cn.market@abclonal.com.cn

 | www.abclonal.com.cn

Product Information

Source

Rabbit

Isotype

IgG

Purification

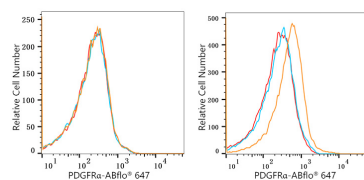
Affinity purification

Storage

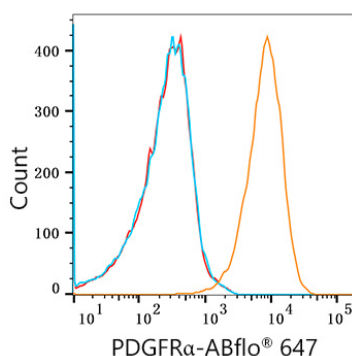
Store at 2-8°C. Avoid freeze.

Buffer: PBS containing 0.2% BSA, preserved with proclin300 or sodium azide (as specified on the Certificate of Analysis), pH 7.3.

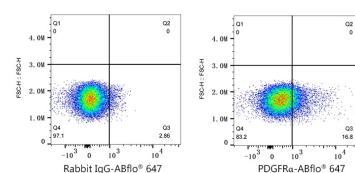
Validation Data



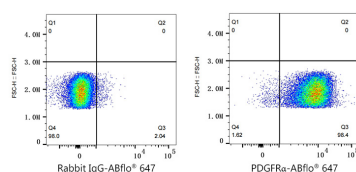
Flow cytometry: 1×10^6 HeLa cells (negative control, Left) and U-138 MG cells (Right) were surface-stained with ABflo® 647 Rabbit anti-Human/Mouse PDGFR α /CD140a mAb (A22690, 5 μ l/Test, orange line) or ABflo® 647 Rabbit IgG isotype control (A22070, 5 μ l/Test, blue line). Non-fluorescently stained cells were used as blank control (red line).



Flow cytometry: 1×10^6 NIH/3T3 cells were surface-stained with ABflo® 647 Rabbit anti-Human/Mouse PDGFR α /CD140a mAb (A22690, 5 μ l/Test, orange line) or ABflo® 647 Rabbit IgG isotype control (A22070, 5 μ l/Test, blue line). Non-fluorescently stained NIH/3T3 cells was used as blank control (red line).



Flow cytometry: 1×10^6 U-138 MG cells were surface-stained with ABflo® 647 Rabbit IgG isotype control (A22070, 5 μ l/Test, left) or ABflo® 647 Rabbit anti-Human/Mouse PDGFR α /CD140a mAb (A22690, 5 μ l/Test, right).



Flow cytometry: 1×10^6 NIH/3T3 cells were surface-stained with ABflo® 647 Rabbit IgG isotype control (A22070, 5 μ l/Test, left) or ABflo® 647 Rabbit anti-Human/Mouse PDGFR α /CD140a mAb (A22690, 5 μ l/Test, right).