

# RELA Rabbit pAb

Catalog No.: A22676 **2 Publications**

## Basic Information

**Observed MW**

65kDa

**Calculated MW**

60kDa

**Category**

Primary antibody

**Applications**

WB, IF/ICC, ELISA

**Cross-Reactivity**

Human, Mouse

## Background

Enables several functions, including DNA-binding transcription factor activity, RNA polymerase II-specific; actinin binding activity; and ankyrin repeat binding activity. Involved in several processes, including negative regulation of protein sumoylation; postsynapse to nucleus signaling pathway; and regulation of transcription, DNA-templated. Acts upstream of or within several processes, including cellular response to hepatocyte growth factor stimulus; cellular response to lipopolysaccharide; and positive regulation of interleukin-12 production. Located in several cellular components, including chromatin; cytosol; and glutamatergic synapse. Is expressed in several structures, including alimentary system; early conceptus; genitourinary system; musculature; and skin. Human ortholog(s) of this gene implicated in ductal carcinoma in situ; lung non-small cell carcinoma; lymphoma; and renal cell carcinoma. Orthologous to human RELA (RELA proto-oncogene, NF- $\kappa$ B subunit).

## Recommended Dilutions

**WB** 1:500 - 1:1000**IF/ICC** 1:50 - 1:200

**ELISA** Recommended starting concentration is 1  $\mu$ g/mL. Please optimize the concentration based on your specific assay requirements.

## Immunogen Information

**Gene ID**

19697

**Swiss Prot**

Q04207

**Immunogen**

Recombinant protein (or fragment). This information is considered to be commercially sensitive.

**Synonyms**p65; p65 NF $\kappa$ B; p65 NF-kappa B; RELA

## Contact

 | 400-999-6126 | [cn.market@abclonal.com.cn](mailto:cn.market@abclonal.com.cn) | [www.abclonal.com.cn](http://www.abclonal.com.cn)

## Product Information

**Source**

Rabbit

**Isotype**

IgG

**Purification**

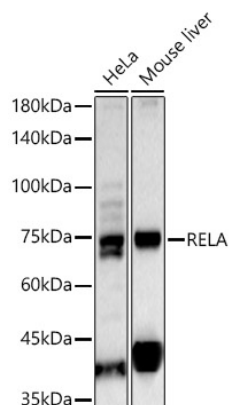
Affinity purification

**Storage**

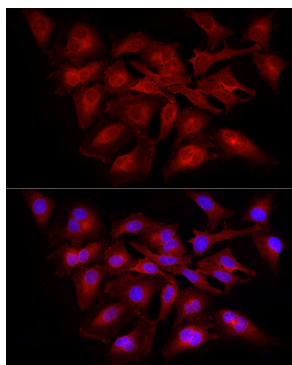
Store at -20°C. Avoid freeze / thaw cycles.

Buffer: PBS containing 50% glycerol, preserved with proclin300 or sodium azide (as specified on the Certificate of Analysis), pH 7.3.

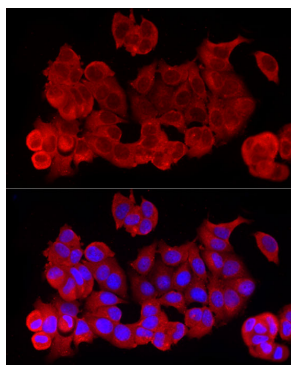
## Validation Data



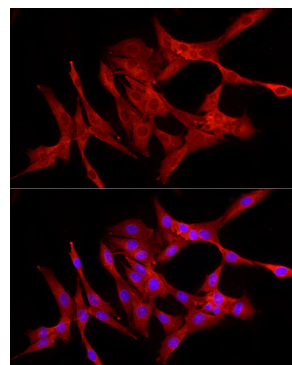
Western blot analysis of various lysates, using RELA Rabbit pAb (A22676) at 1:700 dilution. Secondary antibody: HRP-conjugated Goat anti-Rabbit IgG (H+L) (AS014) at 1:10000 dilution. Lysates/proteins: 25µg per lane. Blocking buffer: 3% nonfat dry milk in TBST. Detection: ECL Basic Kit (RM00020). Exposure time: 20s.



Immunofluorescence analysis of HeLa cells using RELA Rabbit pAb (A22676) at dilution of 1:100 (40x lens). Secondary antibody: Cy3-conjugated Goat anti-Rabbit IgG (H+L) (AS007) at 1:500 dilution. Blue: DAPI for nuclear staining.



Immunofluorescence analysis of MCF7 cells using RELA Rabbit pAb (A22676) at dilution of 1:100 (40x lens). Secondary antibody: Cy3-conjugated Goat anti-Rabbit IgG (H+L) (AS007) at 1:500 dilution. Blue: DAPI for nuclear staining.



Immunofluorescence analysis of NIH/3T3 cells using RELA Rabbit pAb (A22676) at dilution of 1:100 (40x lens). Secondary antibody: Cy3-conjugated Goat anti-Rabbit IgG (H+L) (AS007) at 1:500 dilution. Blue: DAPI for nuclear staining.