

GSK-3 α / β Rabbit mAb

Catalog No.: A22665

Recombinant

1 Publications

Basic Information

Observed MW

46kDa/48kDa

Calculated MW

46kDa/48kDa

Category

Primary antibody

Applications

WB,IP,ELISA

Cross-Reactivity

Human, Mouse, Rat

CloneNo number

ARC55345

Background

The protein encoded by this gene is a serine-threonine kinase, belonging to the glycogen synthase kinase subfamily. It is involved in energy metabolism, neuronal cell development, and body pattern formation. Polymorphisms in this gene have been implicated in modifying risk of Parkinson disease, and studies in mice show that overexpression of this gene may be relevant to the pathogenesis of Alzheimer disease. Alternatively spliced transcript variants encoding different isoforms have been found for this gene.

Recommended Dilutions

WB 1:2000 - 1:20000

IP 0.5 μ g-4 μ g antibody for
200 μ g-400 μ g extracts of
whole cells

ELISA Recommended starting
concentration is 1 μ g/mL.
Please optimize the
concentration based on
your specific assay
requirements.

Immunogen Information

Gene ID

2931/2932

Swiss Prot

P49840/P49841

Immunogen

Recombinant protein (or fragment). This information is considered to be commercially sensitive.

Synonyms

GSK3B; gsk-3 β ; GSK-3 α / β

Contact

☎ | 400-999-6126

✉ | cn.market@abclonal.com.cn

🌐 | www.abclonal.com.cn

Product Information

Source

Rabbit

Isotype

IgG

Purification

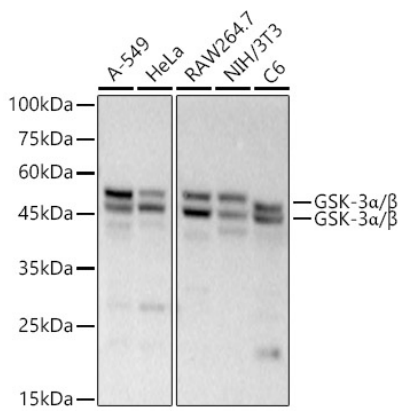
Affinity purification

Storage

Store at -20°C. Avoid freeze / thaw cycles.

Buffer: PBS containing 50% glycerol and 0.05% BSA, preserved with proclin300 or sodium azide (as specified on the Certificate of Analysis), pH 7.3.

Validation Data



Western blot analysis of various lysates, using GSK-3α/β Rabbit mAb (A22665) at 1:20000 dilution.
Secondary antibody: HRP-conjugated Goat anti-Rabbit IgG (H+L) (AS014) at 1:10000 dilution.
Lysates/proteins: 25μg per lane.
Blocking buffer: 3% nonfat dry milk in TBST.
Detection: ECL Basic Kit (RM00020).
Exposure time: 90s.