

NEDD8 Rabbit mAb

Catalog No.: A22568 **Recombinant** **1 Publications**

Basic Information

Observed MW

9kDa

Calculated MW

9kDa

Category

Primary antibody

Applications

WB, ELISA

Cross-Reactivity

Human, Mouse, Rat

CloneNo number

ARC58460

Background

Enables ubiquitin protein ligase binding activity. Acts upstream of or within protein neddylation. Located in cytosol and nucleoplasm. Biomarker of Parkinson's disease and malignant astrocytoma.

Recommended Dilutions

WB 1:1000 - 1:6000

ELISA Recommended starting concentration is 1 µg/mL. Please optimize the concentration based on your specific assay requirements.

Immunogen Information

Gene ID

4738

Swiss Prot

Q15843

Immunogen

Recombinant protein (or fragment). This information is considered to be commercially sensitive.

Synonyms

NEDD-8; NEDD8

Contact

 | 400-999-6126

 | cn.market@abclonal.com.cn

 | www.abclonal.com.cn

Product Information

Source

Rabbit

Isotype

IgG

Purification

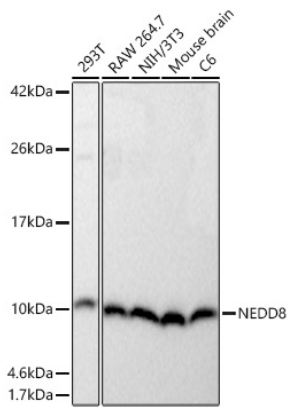
Affinity purification

Storage

Store at -20°C. Avoid freeze / thaw cycles.

Buffer: PBS containing 50% glycerol and 0.05% BSA, preserved with proclin300 or sodium azide (as specified on the Certificate of Analysis), pH 7.3.

Validation Data



Western blot analysis of various lysates using NEDD8 Rabbit mAb (A22568) at 1:1000 dilution incubated overnight at 4°C.
Secondary antibody: HRP-conjugated Goat anti-Rabbit IgG (H+L) (AS014) at 1:10000 dilution.
Lysates/proteins: 25 µg per lane.
Blocking buffer: 3% nonfat dry milk in TBST.
Detection: ECL Basic Kit (RM00020).
Exposure time: 10s.