

ABflo® 647 Rabbit anti-Human IgG (Fc) mAb

Catalog No.: A22505

Basic Information

Observed MW

Refer to figures

Calculated MW

36kDa

Category

Primary antibody

Applications

FC (intra)

Cross-Reactivity

Human

CloneNo number

ARC53383

Conjugate

ABflo® 647. Ex:648nm. Em:664nm.

Recommended Dilutions

FC (intra) 5 µl per 10⁶ cells in
100 µl volume

Background

Predicted to enable antigen binding activity and immunoglobulin receptor binding activity. Predicted to be involved in several processes, including activation of immune response; defense response to other organism; and phagocytosis. Predicted to act upstream of or within several processes, including immunoglobulin mediated immune response; positive regulation of hypersensitivity; and positive regulation of phagocytosis. Located in extracellular space.

Immunogen Information

Gene ID

3500

Swiss Prot

P01857

Immunogen


Recombinant protein (or fragment). This information is considered to be commercially sensitive.

Synonyms

Contact

 | 400-999-6126

 | cn.market@abclonal.com.cn

 | www.abclonal.com.cn

Product Information

Source

Rabbit

Isotype

IgG

Purification

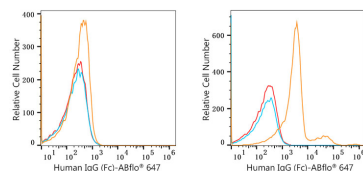
Affinity purification

Storage

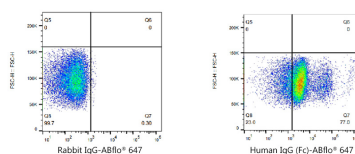
Store at 2-8°C. Avoid freeze.

Buffer: PBS containing 0.2% BSA, preserved with proclin300 or sodium azide (as specified on the Certificate of Analysis), pH 7.3.

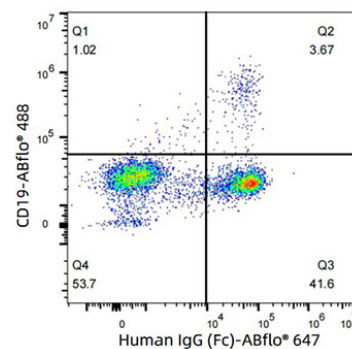
Validation Data



Flow cytometry: 1×10^6 293F cells (negative control, left) and 293F (Transfection, right) cells were intracellularly-stained with ABflo® 647 Rabbit anti-Human IgG (Fc) mAb (A22505, 5 μ l/Test, orange line) or ABflo® 647 Rabbit IgG isotype control (A22070, 5 μ l/Test, blue line). Non-fluorescently stained cells were used as blank control (red line).



Flow cytometry: 1×10^6 293F (Transfection) cells were intracellularly-stained with ABflo® 647 Rabbit IgG isotype control (A22070, 5 μ l/Test, left) or ABflo® 647 Rabbit anti-Human IgG (Fc) mAb (A22505, 5 μ l/Test, right).



Flow cytometry: 1×10^6 Human PBMC cells were intracellularly-stained with ABflo® 647 Rabbit IgG isotype control (A22070, 5 μ l/Test) or ABflo® 647 Rabbit anti-Human IgG (Fc) mAb (A22505, 5 μ l/Test). The cells were simultaneously stained with ABflo® 488 Rabbit anti-Human/Monkey CD19 mAb (A23008, 5 μ l/Test).