

ABflo® 647 Rabbit anti-Human CD142 mAb

Catalog No.: A22493

Basic Information

Observed MW**Calculated MW**

33kDa

Category

Primary antibody

Applications

FC

Cross-Reactivity

Human

CloneNo number

ARC55325

Conjugate

ABflo® 647. Ex:648nm. Em:664nm.

Background

This gene encodes coagulation factor III which is a cell surface glycoprotein. This factor enables cells to initiate the blood coagulation cascades, and it functions as the high-affinity receptor for the coagulation factor VII. The resulting complex provides a catalytic event that is responsible for initiation of the coagulation protease cascades by specific limited proteolysis. Unlike the other cofactors of these protease cascades, which circulate as nonfunctional precursors, this factor is a potent initiator that is fully functional when expressed on cell surfaces, for example, on monocytes. There are 3 distinct domains of this factor: extracellular, transmembrane, and cytoplasmic. Platelets and monocytes have been shown to express this coagulation factor under procoagulatory and proinflammatory stimuli, and a major role in HIV-associated coagulopathy has been described. Platelet-dependent monocyte expression of coagulation factor III has been described to be associated with Coronavirus Disease 2019 (COVID-19) severity and mortality. This protein is the only one in the coagulation pathway for which a congenital deficiency has not been described. Alternate splicing results in multiple transcript variants.

Recommended Dilutions

FC 5 µl per 10⁶ cells in
100 µl volume

Immunogen Information

Gene ID

2152

Swiss Prot

P13726

Immunogen

Recombinant protein (or fragment). This information is considered to be commercially sensitive.

Synonyms

TF; TFA; CD142

Contact

 | 400-999-6126 | cn.market@abclonal.com.cn | www.abclonal.com.cn

Product Information

Source

Rabbit

Isotype

IgG

Purification

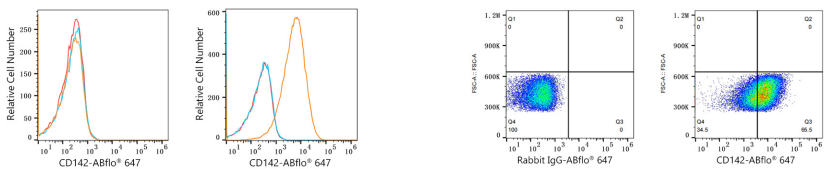
Affinity purification

Storage

Store at 2-8°C. Avoid freeze.

Buffer: PBS containing 0.2% BSA, preserved with proclin300 or sodium azide (as specified on the Certificate of Analysis), pH 7.3.

Validation Data



Flow cytometry: 1X10⁶ HEL cells (negative control,left) and A-431 cells (right) were surface-stained with ABflo® 647 Rabbit anti-Human CD142 mAb (A22493,2 µg/mL,orange line) or ABflo® 647 Rabbit IgG isotype control (A22070,2 µg/mL,blue line). Non-fluorescently stained cells was used as blank control (red line).

Flow cytometry: 1X10⁶ A-431 cells were surface-stained with ABflo® 647 Rabbit IgG isotype control (A22070,5 µl/Test,left) or ABflo® 647 Rabbit anti-Human CD142 mAb (A22493,5 µl/Test,right).