

# ABflo® 488 Rabbit anti-Human CD326/EPCAM mAb

Catalog No.: A22485

## Basic Information

### Observed MW

### Calculated MW

35kDa

### Category

Primary antibody

### Applications

FC

### Cross-Reactivity

Human

### CloneNo number

ARC57676

### Conjugate

ABflo® 488. Ex:491nm. Em:516nm.

## Recommended Dilutions

FC 5 µl per 10<sup>6</sup> cells in  
100 µl volume

## Background

This gene encodes a carcinoma-associated antigen and is a member of a family that includes at least two type I membrane proteins. This antigen is expressed on most normal epithelial cells and gastrointestinal carcinomas and functions as a homotypic calcium-independent cell adhesion molecule. The antigen is being used as a target for immunotherapy treatment of human carcinomas. Mutations in this gene result in congenital tufting enteropathy.

## Immunogen Information

### Gene ID

4072

### Swiss Prot

P16422

### Immunogen

Recombinant protein (or fragment). This information is considered to be commercially sensitive.

### Synonyms

ESA; KSA; M4S1; MK-1; DIAR5; EGP-2; EGP40; KS1/4; MIC18; TROP1; BerEp4; EGP314; HNPCC8; LYNCH8; MOC-31; Ber-Ep4; TACSTD1

## Contact

☎ | 400-999-6126

✉ | [cn.market@abclonal.com.cn](mailto:cn.market@abclonal.com.cn)

🌐 | [www.abclonal.com.cn](http://www.abclonal.com.cn)

## Product Information

### Source

Rabbit

### Isotype

IgG

### Purification

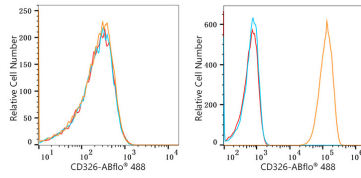
Affinity purification

### Storage

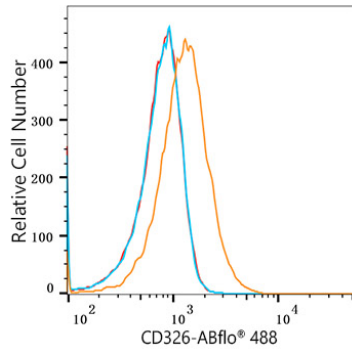
Store at 2-8°C. Avoid freeze.

Buffer: PBS containing 0.2% BSA, preserved with proclin300 or sodium azide (as specified on the Certificate of Analysis), pH 7.3.

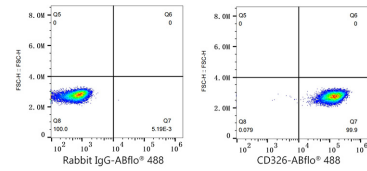
## Validation Data



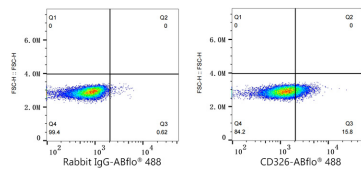
Flow cytometry:  $1 \times 10^6$  Jurkat cells (negative control, left) and HT-29 cells (right) were surface-stained with ABflo® 488 Rabbit anti-Human CD326/EPCAM mAb (A22485, 2 µg/mL, orange line) or ABflo® 488 Rabbit IgG isotype control (A22069, 2 µg/mL, blue line). Non-fluorescently stained cells was used as blank control (red line).



Flow cytometry:  $1 \times 10^6$  HeLa cells (Low Expression) were surface-stained with ABflo® 488 Rabbit anti-Human CD326/EPCAM mAb (A22485, 5 µl/Test, orange line) or ABflo® 488 Rabbit IgG isotype control (A22069, 5 µl/Test, blue line). Non-fluorescently stained HeLa cells was used as blank control (red line).



Flow cytometry:  $1 \times 10^6$  HT-29 cells were surface-stained with ABflo® 488 Rabbit IgG isotype control (A22069, 5 µl/Test, left) or ABflo® 488 Rabbit anti-Human CD326/EPCAM mAb (A22485, 5 µl/Test, right).



Flow cytometry:  $1 \times 10^6$  HeLa cells (Low Expression) were surface-stained with ABflo® 488 Rabbit IgG isotype control (A22069, 5 µl/Test, left) or ABflo® 488 Rabbit anti-Human CD326/EPCAM mAb (A22485, 5 µl/Test, right).