

# TGF beta Receptor II (TGFB2) Rabbit mAb

Catalog No.: A22471 **Recombinant**

## Basic Information

### Observed MW

Refer to figures

### Calculated MW

65kDa

### Category

Primary antibody

### Applications

ELISA,IHC-P

### Cross-Reactivity

Human, Mouse

### CloneNo number

ARC57218

## Background

The protein encoded by this gene is a transmembrane protein that has a protein kinase domain, forms a heterodimeric complex with TGF-beta receptor type-1, and binds TGF-beta. This receptor/ligand complex phosphorylates proteins, which then enter the nucleus and regulate the transcription of genes related to cell proliferation, cell cycle arrest, wound healing, immunosuppression, and tumorigenesis. Mutations in this gene have been associated with Marfan Syndrome, Loeys-Deitz Aortic Aneurysm Syndrome, and the development of various types of tumors. Alternatively spliced transcript variants encoding different isoforms have been characterized.

## Recommended Dilutions

IHC-P 1:50 - 1:200

## Immunogen Information

### Gene ID

7048

### Swiss Prot

P37173

### Immunogen

A synthetic peptide corresponding to a sequence within amino acids 200-300 of human TGF beta Receptor II (TGFB2) (NP\_003233.4).

### Synonyms

AAT3; FAA3; LDS2; MFS2; RIIC; LDS1B; LDS2B; TAAD2; TBR1; TBR-ii; TGFR-2; tbetaR-II; TGFbeta-R1; TGF beta Receptor II (TGFB2)

## Contact

☎ | 400-999-6126

✉ | [cn.market@abclonal.com.cn](mailto:cn.market@abclonal.com.cn)

🌐 | [www.abclonal.com.cn](http://www.abclonal.com.cn)

## Product Information

### Source

Rabbit

### Isotype

IgG

### Purification

Affinity purification

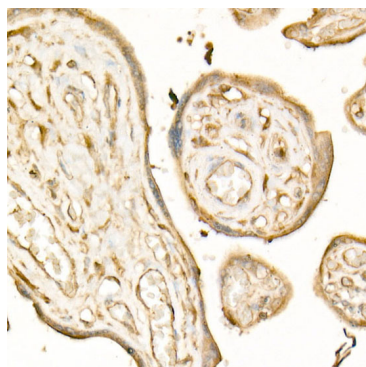
### Storage

Store at -20°C. Avoid freeze / thaw cycles.

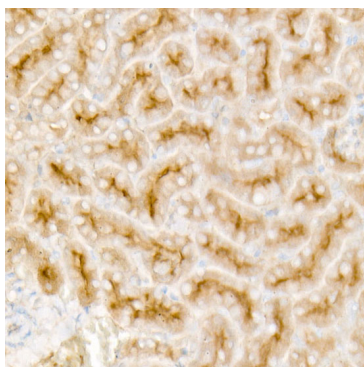
Buffer: PBS with 0.05% proclin300,0.05% BSA,50% glycerol,pH7.3.

## Validation Data

---



Immunohistochemistry analysis of paraffin-embedded human placenta using TGF beta Receptor II (TGFB2) Rabbit mAb (A22471) at dilution of 1:200 (40x lens). Perform high pressure antigen retrieval with 10 mM citrate buffer pH 6.0 before commencing with IHC staining protocol.



Immunohistochemistry analysis of paraffin-embedded mouse kidney using TGF beta Receptor II (TGFB2) Rabbit mAb (A22471) at dilution of 1:200 (40x lens). Perform high pressure antigen retrieval with 10 mM citrate buffer pH 6.0 before commencing with IHC staining protocol.