

# AHR Rabbit PolymAb®

**Catalog No.: A22464**

## Basic Information

### Observed MW

105kDa

### Calculated MW

96kDa

### Category

Primary antibody

### Applications

ELISA, WB, IHC-P, IF/ICC

### Cross-Reactivity

Human, Mouse

### CloneNo number

ARC53211\_ARC53212

## Background

The protein encoded by this gene is a ligand-activated helix-loop-helix transcription factor involved in the regulation of biological responses to planar aromatic hydrocarbons. This receptor has been shown to regulate xenobiotic-metabolizing enzymes such as cytochrome P450. Before ligand binding, the encoded protein is sequestered in the cytoplasm; upon ligand binding, this protein moves to the nucleus and stimulates transcription of target genes.

## Recommended Dilutions

<b>WB</b>	1:2000 - 1:10000
<b>IHC-P</b>	1:100 - 1:500
<b>IF/ICC</b>	1:50 - 1:200

## Immunogen Information

### Gene ID

196

### Swiss Prot

P35869

### Immunogen

Recombinant fusion protein containing a sequence corresponding to amino acids 619-848 of human AHR Rabbit PolymAb® (NP\_001612.1).

### Synonyms

RP85; bHLHe76

## Contact

☎	400-999-6126
✉	cn.market@abclonal.com.cn
🌐	www.abclonal.com.cn

## Product Information

### Source

Rabbit

### Isotype

IgG

### Purification

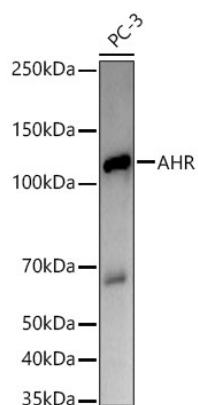
Affinity purification

### Storage

Store at -20°C. Avoid freeze / thaw cycles.

Buffer: PBS with 0.05% proclin300, 0.05% BSA, 50% glycerol, pH7.3.

## Validation Data



Western blot analysis of lysates from PC-3 cells, using AHR Rabbit PolymAb® (A22464) at 1:10000 dilution.

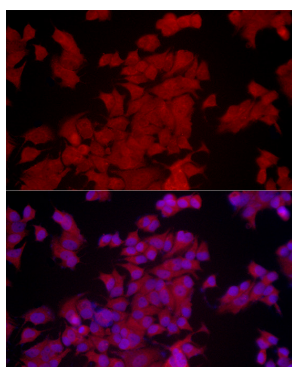
Secondary antibody: HRP Goat Anti-Rabbit IgG (H+L) (AS014) at 1:10000 dilution.

Lysates/proteins: 25µg per lane.

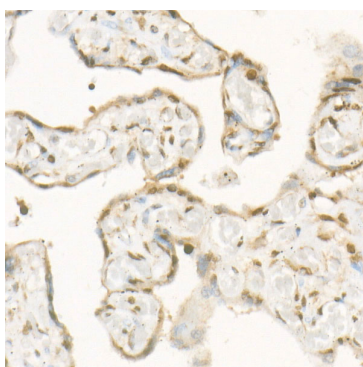
Blocking buffer: 3% nonfat dry milk in TBST.

Detection: ECL Basic Kit (RM00020).

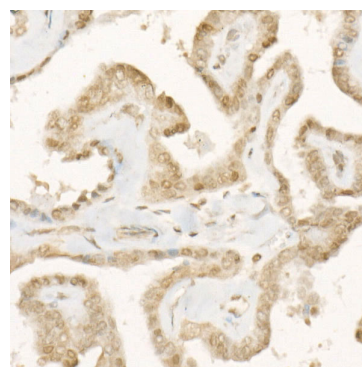
Exposure time: 180s.



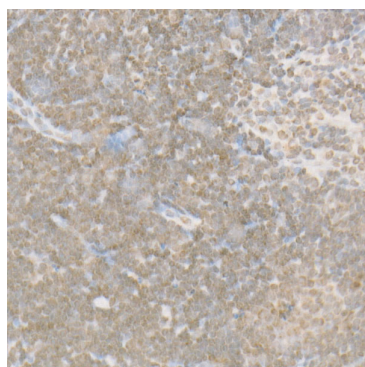
Immunofluorescence analysis of MCF7 cells using AHR Rabbit PolymAb® (A22464) at dilution of 1:100 (40x lens). Secondary antibody: Cy3 Goat Anti-Rabbit IgG (H+L) (AS007) at 1:500 dilution. Blue: DAPI for nuclear staining.



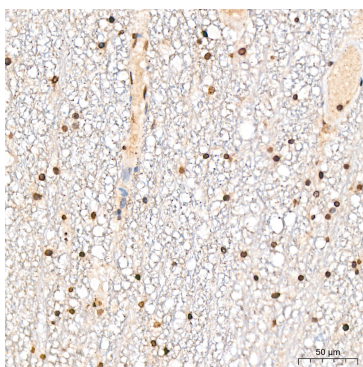
Immunohistochemistry analysis of paraffin-embedded human placenta using AHR Rabbit PolymAb® (A22464) at dilution of 1:500 (40x lens). Perform high pressure antigen retrieval with 10 mM citrate buffer pH 6.0 before commencing with IHC staining protocol.



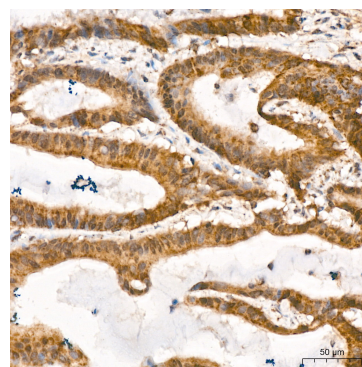
Immunohistochemistry analysis of paraffin-embedded human thyroid cancer using AHR Rabbit PolymAb® (A22464) at dilution of 1:500 (40x lens). Perform high pressure antigen retrieval with 10 mM citrate buffer pH 6.0 before commencing with IHC staining protocol.



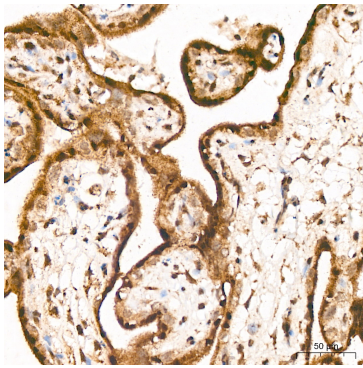
Immunohistochemistry analysis of paraffin-embedded mouse spleen using AHR Rabbit PolymAb® (A22464) at dilution of 1:500 (40x lens). Perform high pressure antigen retrieval with 10 mM citrate buffer pH 6.0 before commencing with IHC staining protocol.



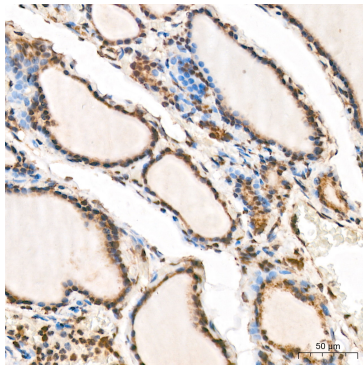
Immunohistochemistry analysis of paraffin-embedded human brain tissue using AHR Rabbit PolymAb® (A22464) at a dilution of 1:200 (40x lens). High pressure antigen retrieval was performed with 0.01 M citrate buffer (pH 6.0) prior to IHC staining.



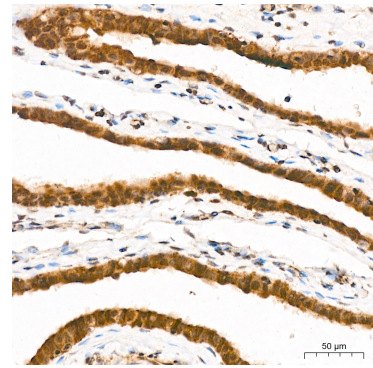
Immunohistochemistry analysis of paraffin-embedded human colon carcinoma tissue using AHR Rabbit PolymAb® (A22464) at a dilution of 1:200 (40x lens). High pressure antigen retrieval was performed with 0.01 M citrate buffer (pH 6.0) prior to IHC staining.



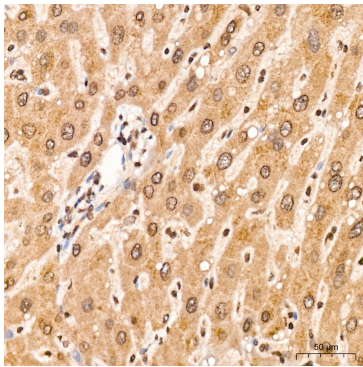
Immunohistochemistry analysis of paraffin-embedded human placenta tissue using AHR Rabbit PolymAb® (A22464) at a dilution of 1:200 (40x lens). High pressure antigen retrieval was performed with 0.01 M citrate buffer (pH 6.0) prior to IHC staining.



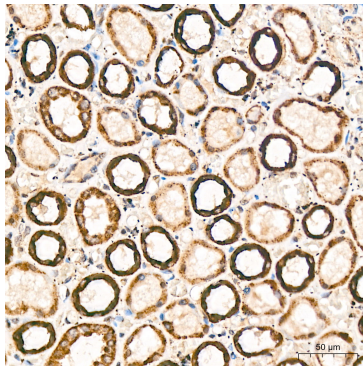
Immunohistochemistry analysis of paraffin-embedded human thyroid tissue using AHR Rabbit PolymAb® (A22464) at a dilution of 1:200 (40x lens). High pressure antigen retrieval was performed with 0.01 M citrate buffer (pH 6.0) prior to IHC staining.



Immunohistochemistry analysis of paraffin-embedded Human fallopian tube tissue using AHR Rabbit PolymAb® (A22464) at a dilution of 1:200 (40x lens). High pressure antigen retrieval was performed with 0.01 M citrate buffer (pH 6.0) prior to IHC staining.



Immunohistochemistry analysis of paraffin-embedded human liver tissue using AHR Rabbit PolymAb® (A22464) at a dilution of 1:200 (40x lens). High pressure antigen retrieval was performed with 0.01 M citrate buffer (pH 6.0) prior to IHC staining.



Immunohistochemistry analysis of paraffin-embedded human kidney tissue using AHR Rabbit PolymAb® (A22464) at a dilution of 1:200 (40x lens). High pressure antigen retrieval was performed with 0.01 M citrate buffer (pH 6.0) prior to IHC staining.