

FITC/5-FAM/6-FAM Rabbit mAb

Catalog No.: A22444 **Recombinant**

Basic Information

Observed MW

25kDa/55kDa

Calculated MW**Category**

Primary antibody

Applications

ELISA, WB

Cross-Reactivity

Species independent

CloneNo number

ARC51073

Background

Fluorescein isothiocyanate (FITC) is a fluorochrome dye that absorbs ultraviolet or blue light causing molecules to become excited and emit a visible yellow-green light. FITC is a commonly used marker for antibodies in immunofluorescent techniques since the conjugation of FITC to proteins is relatively easy and does not, in general, destroy the biological activity of the labeled protein. FITC is also widely used as a hapten to label different proteins. It is typically available as a mixture of isomers, fluorescein 5-isothiocyanate (5-FITC) and fluorescein 6-isothiocyanate (6-FITC). FITC is reactive towards nucleophiles including amine and sulfhydryl groups on proteins. CAS number of FITC: 27072-45-3 (mixture); 3326-32-7, 5-isomer; 18861-78-4 (6-isomer). 5-FAM is a single isomer with Ex/Em of 490 nm/520 nm. The single isomer, 6-FAM, contains a carboxylic acid that can be used to react with primary amines via carbodiimide activation of the carboxylic acid. Fluorescein is the most common fluorescent derivatization reagent for labeling biomolecules.

Recommended Dilutions

ELISA 1:500 - 1:2000**WB** 1:2000 - 1:4800

Immunogen Information

Gene ID**Swiss Prot****Immunogen**

FITC

Synonyms

Contact

 | 400-999-6126 | cn.market@abclonal.com.cn | www.abclonal.com.cn

Product Information

Source

Rabbit

Isotype

IgG

Purification

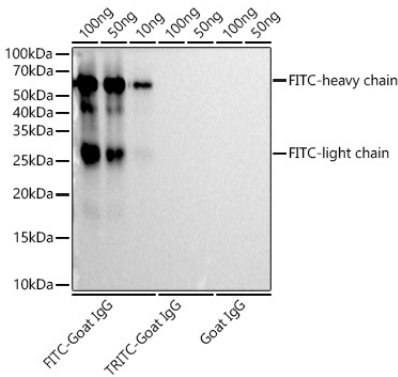
Affinity purification

Storage

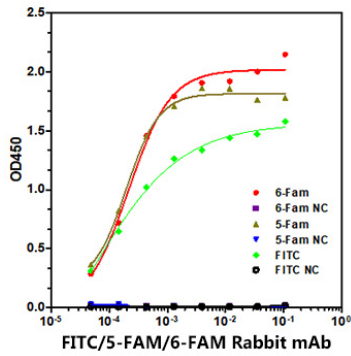
Store at -20°C. Avoid freeze / thaw cycles.

Buffer: PBS with 0.05% proclin300, 0.05% BSA, 50% glycerol, pH7.3.

Validation Data



The FITC rabbit monoclonal antibody (A22444) are tested in Western blot against FITC Goat IgG (AS001),TRITC Goat IgG (AS026) and Goat IgG (AS071) at 1:4000 dilution.
Secondary antibody: HRP Goat Anti-Rabbit IgG (H+L) (AS014) at 1:10000 dilution.
Lysates/proteins: 25µg per lane.
Blocking buffer: 3% nonfat dry milk in TBST.
Detection: ECL Basic Kit (RM00020).
Exposure time: 10s.



Immobilized biotin-6 Fam, biotin-5 Fam, biotin-FITC, at 1 µg/mL (25 µL/well), of which EC₅₀ ranges are 0.18-0.40 ng/mL, 0.19-0.29 ng/mL and 0.15-0.29 ng/mL ,can bind anti 6-Fam/ 5-Fam/ FITC mAb (A22444), respectively.