

# Caveolin-1 Rabbit mAb

Catalog No.: A22417 **Recombinant** **2 Publications**

## Basic Information

### Observed MW

21 kDa/24 kDa

### Calculated MW

20 kDa

### Category

Primary antibody

### Applications

WB,IF/ICC,IF-F,IF-P,IHC-P,IP,ELISA

### Cross-Reactivity

Human, Mouse, Rat

### CloneNo number

ARC50840

## Background

The scaffolding protein encoded by this gene is the main component of the caveolae plasma membranes found in most cell types. The protein links integrin subunits to the tyrosine kinase FYN, an initiating step in coupling integrins to the Ras-ERK pathway and promoting cell cycle progression. The gene is a tumor suppressor gene candidate and a negative regulator of the Ras-p42/44 mitogen-activated kinase cascade. Caveolin 1 and caveolin 2 are located next to each other on chromosome 7 and express colocalizing proteins that form a stable hetero-oligomeric complex. Mutations in this gene have been associated with Berardinelli-Seip congenital lipodystrophy. Alternatively spliced transcripts encode alpha and beta isoforms of caveolin 1.

## Recommended Dilutions

**WB** 1:1000 - 1:6000

**IF/ICC** 1:50 - 1:200

**IF-F** 1:200 - 1:400

**IF-P** 1:200 - 1:400

**IHC-P** 1:2000 - 1:8000

**IP** 0.5µg-4µg antibody for  
200µg-400µg extracts of  
whole cells

**ELISA** Recommended starting  
concentration is 1 µg/mL.  
Please optimize the  
concentration based on  
your specific assay  
requirements.

## Immunogen Information

### Gene ID

857

### Swiss Prot

Q03135

### Immunogen

Recombinant protein (or fragment). This information is considered to be commercially sensitive.

### Synonyms

CGL3; PPH3; BSCL3; LCCNS; VIP21; MSTP085; Caveolin-1

## Product Information

### Source

Rabbit

### Isotype

IgG

### Purification

Affinity purification

### Storage

Store at -20°C. Avoid freeze / thaw cycles.

Buffer: PBS containing 50% glycerol and 0.05% BSA, preserved with proclin300 or sodium azide (as specified on the Certificate of Analysis), pH 7.3.

## Contact

---

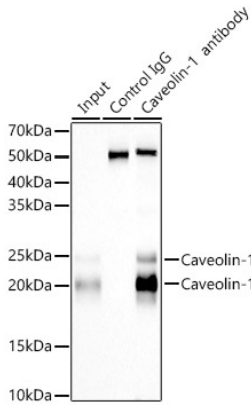
 | 400-999-6126

 | [cn.market@abclonal.com.cn](mailto:cn.market@abclonal.com.cn)

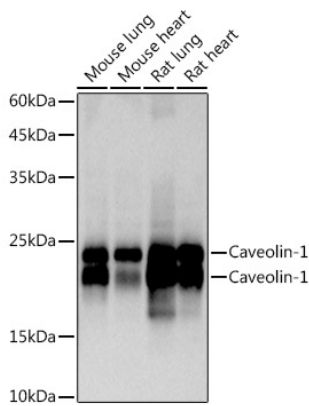
 | [www.abclonal.com.cn](http://www.abclonal.com.cn)

---

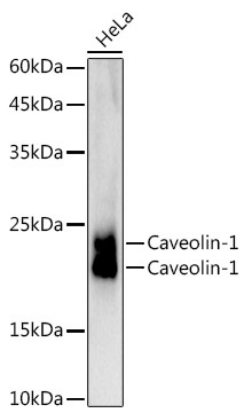
## Validation Data



Immunoprecipitation analysis of 300 µg extracts of A-549 cells using 3 µg Caveolin-1 Rabbit mAb(A22417). Western blot was performed from the immunoprecipitate using Caveolin-1 Rabbit mAb(A22417) at a dilution of 1:1000.

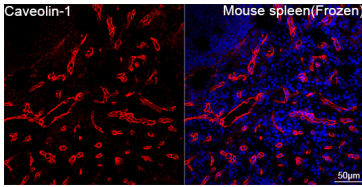


Western blot analysis of various lysates using Caveolin-1 Rabbit mAb (A22417) at 1:1000 dilution. Secondary antibody: HRP-conjugated Goat anti-Rabbit IgG (H+L) (AS014) at 1:10000 dilution. Lysates/proteins: 25µg per lane. Blocking buffer: 3% nonfat dry milk in TBST. Detection: ECL Basic Kit (RM00020). Exposure time: 3s.

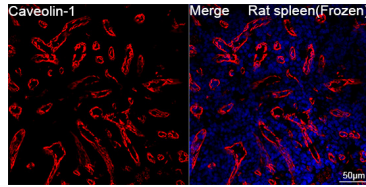


Western blot analysis of lysates from HeLa cells, using Caveolin-1 Rabbit mAb (A22417) at 1:1000 dilution. Secondary antibody: HRP-conjugated Goat anti-Rabbit IgG (H+L) (AS014) at 1:10000 dilution. Lysates/proteins: 25µg per lane. Blocking buffer: 3% nonfat dry milk in TBST. Detection: ECL Basic Kit (RM00020). Exposure time: 30s.

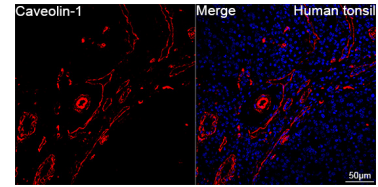
## Validation Data



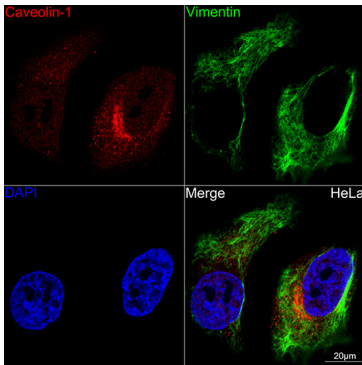
Confocal imaging of frozen sections of Mouse spleen tissue using Caveolin-1 Rabbit mAb (A22417, dilution 1:200) followed by a further incubation with Cy3-conjugated Goat anti-Rabbit IgG (H+L) (AS007, dilution 1:500) (Red). DAPI was used for nuclear staining (Blue). Microwave antigen retrieval performed with 0.01M Citrate Buffer (pH 6.0) prior to IF staining. Objective: 40x.



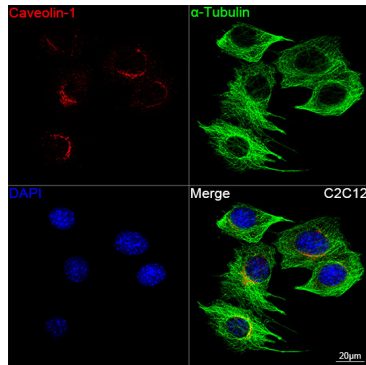
Confocal imaging of frozen sections of Rat spleen tissue using Caveolin-1 Rabbit mAb (A22417, dilution 1:200) followed by a further incubation with Cy3-conjugated Goat anti-Rabbit IgG (H+L) (AS007, dilution 1:500) (Red). DAPI was used for nuclear staining (Blue). Microwave antigen retrieval performed with 0.01M Citrate Buffer (pH 6.0) prior to IF staining. Objective: 40x.



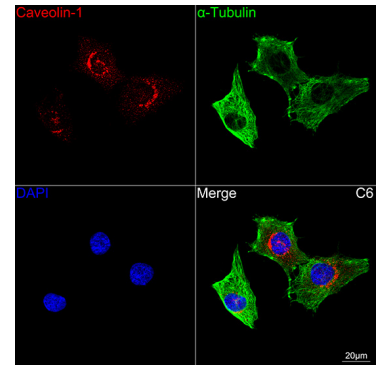
Confocal imaging of paraffin-embedded Human tonsil tissue using Caveolin-1 Rabbit mAb (A22417, dilution 1:200) followed by a further incubation with Cy3-conjugated Goat anti-Rabbit IgG (H+L) (AS007, dilution 1:500) (Red). DAPI was used for nuclear staining (Blue). High pressure antigen retrieval performed with 0.01M Citrate Buffer (pH 6.0) prior to IF staining. Objective: 40x.



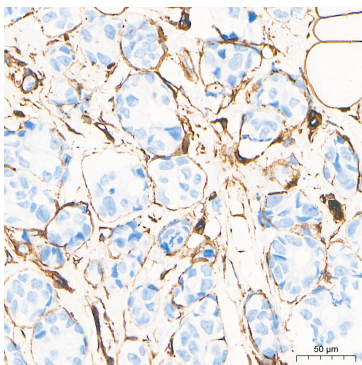
Confocal imaging of HeLa cells using Caveolin-1 Rabbit mAb (A22417, dilution 1:100) (Red). The cells were counterstained with Vimentin Rabbit mAb (A19607, dilution 1:100) (Green). DAPI was used for nuclear staining (blue). Objective: 60x.



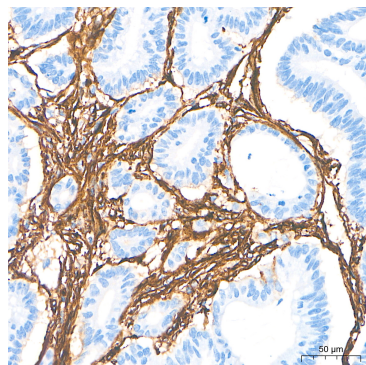
Confocal imaging of C2C12 cells using Caveolin-1 Rabbit mAb (A22417, dilution 1:200) followed by a further incubation with Cy3 Goat Anti-Rabbit IgG (H+L) (AS007, dilution 1:500) (Red). The cells were counterstained with α-Tubulin Mouse mAb (AC012, dilution 1:400) followed by incubation with ABflo® 488-conjugated Goat Anti-Mouse IgG (H+L) Ab (AS076, dilution 1:500) (Green). DAPI was used for nuclear staining (Blue). Objective: 100x.



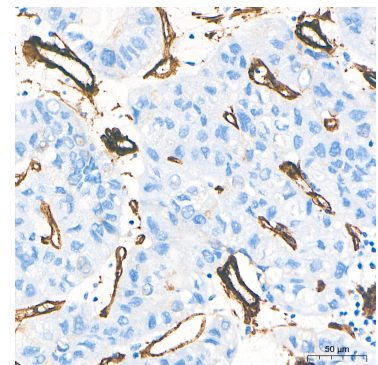
Confocal imaging of C6 cells using Caveolin-1 Rabbit mAb (A22417, dilution 1:200) followed by a further incubation with Cy3 Goat Anti-Rabbit IgG (H+L) (AS007, dilution 1:500) (Red). The cells were counterstained with α-Tubulin Mouse mAb (AC012, dilution 1:400) followed by incubation with ABflo® 488-conjugated Goat Anti-Mouse IgG (H+L) Ab (AS076, dilution 1:500) (Green). DAPI was used for nuclear staining (Blue). Objective: 100x.



Immunohistochemistry analysis of paraffin-embedded Human breast cancer tissue using Caveolin-1 Rabbit mAb (A22417) at a dilution of 1:4000 (40x lens). High pressure antigen



Immunohistochemistry analysis of paraffin-embedded Human colon carcinoma tissue using Caveolin-1 Rabbit mAb (A22417) at a dilution of 1:4000 (40x lens). High pressure

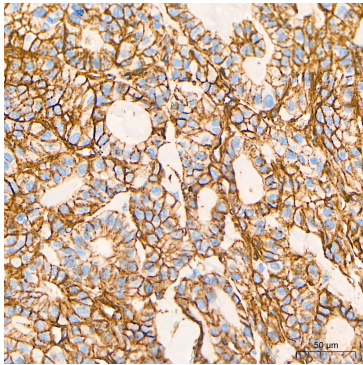


Immunohistochemistry analysis of paraffin-embedded Human liver cancer tissue using Caveolin-1 Rabbit mAb (A22417) at a dilution of 1:4000 (40x lens). High pressure antigen

## Validation Data

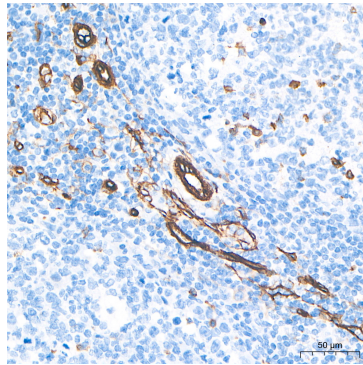
---

retrieval performed with 0.01M Tris-EDTA Buffer (pH 9.0) prior to IHC staining.



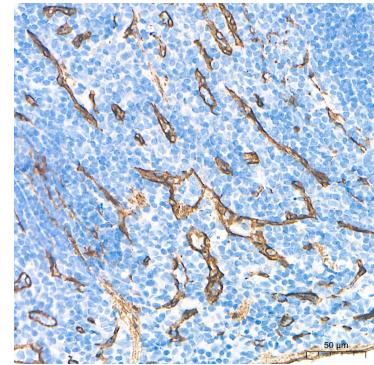
Immunohistochemistry analysis of paraffin-embedded Human thyroid cancer tissue using Caveolin-1 Rabbit mAb (A22417) at a dilution of 1:4000 (40x lens). High pressure antigen retrieval performed with 0.01M Tris-EDTA Buffer (pH 9.0) prior to IHC staining.

antigen retrieval performed with 0.01M Tris-EDTA Buffer (pH 9.0) prior to IHC staining.

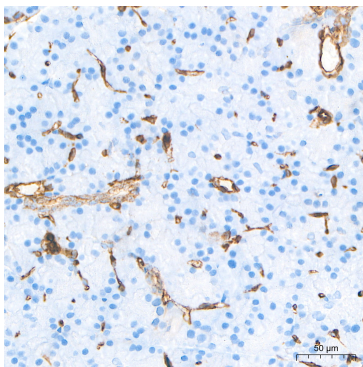


Immunohistochemistry analysis of paraffin-embedded Human tonsil tissue using Caveolin-1 Rabbit mAb (A22417) at a dilution of 1:4000 (40x lens). High pressure antigen retrieval performed with 0.01M Tris-EDTA Buffer (pH 9.0) prior to IHC staining.

retrieval performed with 0.01M Tris-EDTA Buffer (pH 9.0) prior to IHC staining.



Immunohistochemistry analysis of paraffin-embedded Mouse spleen tissue using Caveolin-1 Rabbit mAb (A22417) at a dilution of 1:4000 (40x lens). High pressure antigen retrieval performed with 0.01M Tris-EDTA Buffer (pH 9.0) prior to IHC staining.



Immunohistochemistry analysis of paraffin-embedded Rat pancreas tissue using Caveolin-1 Rabbit mAb (A22417) at a dilution of 1:4000 (40x lens). High pressure antigen retrieval performed with 0.01M Tris-EDTA Buffer (pH 9.0) prior to IHC staining.