

# CD79B Rabbit mAb

Catalog No.: A22382 **Recombinant**

## Basic Information

**Observed MW**

Refer to figures

**Calculated MW**

26kDa

**Category**

Primary antibody

**Applications**

WB,IF-P,IHC-P,ELISA

**Cross-Reactivity**

Human, Mouse, Rat

**CloneNo number**

ARC52685

## Background

The B lymphocyte antigen receptor is a multimeric complex that includes the antigen-specific component, surface immunoglobulin (Ig). Surface Ig non-covalently associates with two other proteins, Ig-alpha and Ig-beta, which are necessary for expression and function of the B-cell antigen receptor. This gene encodes the Ig-beta protein of the B-cell antigen component. Alternatively spliced transcript variants encoding different isoforms have been described.

## Recommended Dilutions

**WB** 1:2000 - 1:6000**IF-P** 1:50 - 1:200**IHC-P** 1:10000 - 1:90000**ELISA** Recommended starting concentration is 1 µg/mL. Please optimize the concentration based on your specific assay requirements.

## Immunogen Information

**Gene ID**

974

**Swiss Prot**

P40259

**Immunogen**

Synthetic peptide. This information is considered to be commercially sensitive.

**Synonyms**

B29; IGB; AGM6; Igbeta; CD79B

## Contact

 | 400-999-6126 | [cn.market@abclonal.com.cn](mailto:cn.market@abclonal.com.cn) | [www.abclonal.com.cn](http://www.abclonal.com.cn)

## Product Information

**Source**

Rabbit

**Isotype**

IgG

**Purification**

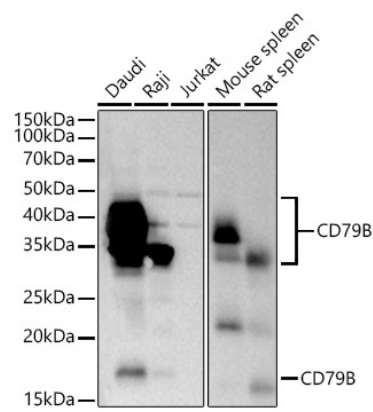
Affinity purification

**Storage**

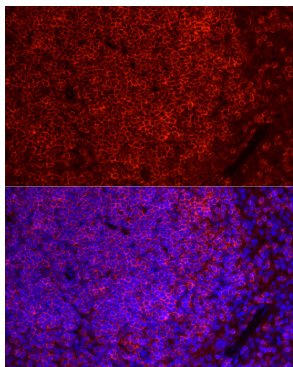
Store at -20°C. Avoid freeze / thaw cycles.

Buffer: PBS with 0.05% proclin300,0.05% BSA,50% glycerol,pH7.3.

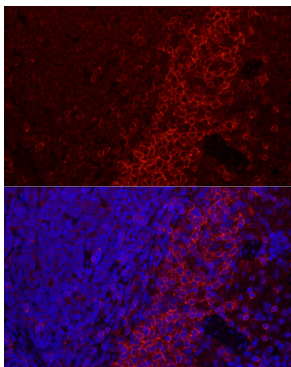
Validation Data



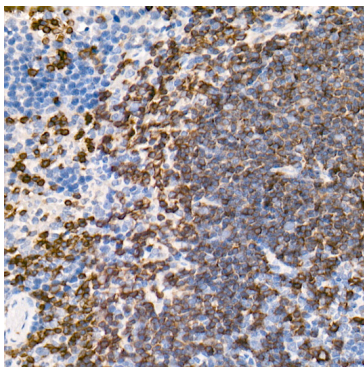
Western blot analysis of various lysates using CD79B Rabbit mAb (A22382) at 1:5000 dilution. Secondary antibody: HRP-conjugated Goat anti-Rabbit IgG (H+L) (AS014) at 1:500000 dilution. Lysates/proteins: 25µg per lane. Blocking buffer: 3% nonfat dry milk in TBST. Detection: ECL Basic Kit (RM00020). Exposure time: 5s.



Immunofluorescence analysis of paraffin-embedded mouse spleen using CD79B Rabbit mAb (A22382) at dilution of 1:100 (40x lens). Secondary antibody: Cy3-conjugated Goat anti-Rabbit IgG (H+L) (AS007) at 1:500 dilution. Blue: DAPI for nuclear staining.



Immunofluorescence analysis of paraffin-embedded rat spleen using CD79B Rabbit mAb (A22382) at dilution of 1:100 (40x lens). Secondary antibody: Cy3-conjugated Goat anti-Rabbit IgG (H+L) (AS007) at 1:500 dilution. Blue: DAPI for nuclear staining.



Immunohistochemistry analysis of paraffin-embedded Mouse spleen using CD79B Rabbit mAb (A22382) at dilution of 1:80000 (40x lens). High pressure antigen retrieval performed with 0.01M Citrate buffer (pH 6.0) prior to IHC staining.