

COPB2 Rabbit mAb

Catalog No.: A22381 **Recombinant**

Basic Information

Observed MW

102kDa

Calculated MW

102kDa

Category

Primary antibody

Applications

WB, IF/ICC, ELISA

Cross-Reactivity

Human

CloneNo number

ARC52631

Background

The Golgi coatomer complex (see MIM 601924) constitutes the coat of nonclathrin-coated vesicles and is essential for Golgi budding and vesicular trafficking. It consists of 7 protein subunits, including COPB2.

Recommended Dilutions

WB 1:2000 - 1:20000

IF/ICC 1:50 - 1:200

ELISA Recommended starting concentration is 1 µg/mL. Please optimize the concentration based on your specific assay requirements.

Immunogen Information

Gene ID

9276

Swiss Prot

P35606

Immunogen

Recombinant protein (or fragment). This information is considered to be commercially sensitive.

Synonyms

OPDD; MCPH19; beta'-COP; COPB2

Contact

☎ | 400-999-6126

✉ | cn.market@abclonal.com.cn

🌐 | www.abclonal.com.cn

Product Information

Source

Rabbit

Isotype

IgG

Purification

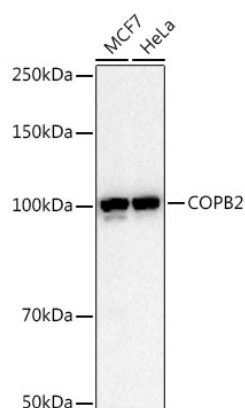
Affinity purification

Storage

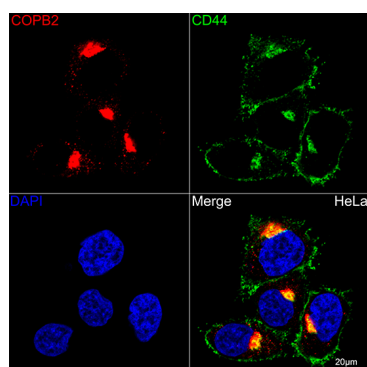
Store at -20°C. Avoid freeze / thaw cycles.

Buffer: PBS containing 50% glycerol and 0.05% BSA, preserved with proclin300 or sodium azide (as specified on the Certificate of Analysis), pH 7.3.

Validation Data



Western blot analysis of various lysates, using COPB2 Rabbit mAb (A22381) at 1:20000 dilution.
Secondary antibody: HRP-conjugated Goat anti-Rabbit IgG (H+L) (AS014) at 1:10000 dilution.
Lysates/proteins: 25µg per lane.
Blocking buffer: 3% nonfat dry milk in TBST.
Detection: ECL Basic Kit (RM00020).
Exposure time: 10s.



Confocal imaging of HeLa cells using COPB2 Rabbit mAb (A22381, dilution 1:100) (Red). The cells were counterstained with CD44 Rabbit mAb (A21919, dilution 1:200) (Green). DAPI was used for nuclear staining (blue). Objective: 60x.