

LRP5 Rabbit mAb

Catalog No.: A22327 **Recombinant** **1 Publications**

Basic Information

Observed MW

200kDa

Calculated MW

179kDa

Category

Primary antibody

Applications

WB,ELISA

Cross-Reactivity

Human, Mouse

CloneNo number

ARC52451

Background

This gene encodes a transmembrane low-density lipoprotein receptor that binds and internalizes ligands in the process of receptor-mediated endocytosis. This protein also acts as a co-receptor with Frizzled protein family members for transducing signals by Wnt proteins and was originally cloned on the basis of its association with type 1 diabetes mellitus in humans. This protein plays a key role in skeletal homeostasis and many bone density related diseases are caused by mutations in this gene. Mutations in this gene also cause familial exudative vitreoretinopathy. Alternative splicing results in multiple transcript variants.

Recommended Dilutions

WB 1:500 - 1:1000

ELISA Recommended starting concentration is 1 µg/mL. Please optimize the concentration based on your specific assay requirements.

Immunogen Information

Gene ID

4041

Swiss Prot

O75197

Immunogen

Synthetic peptide. This information is considered to be commercially sensitive.

Synonyms

HBM; LR3; OPS; EVR1; EVR4; LRP7; OPPG; BMND1; LRP-5; LRP-7; OPTA1; PCLD4; VBCH2; LRP5

Contact

☎ | 400-999-6126

✉ | cn.market@abclonal.com.cn

🌐 | www.abclonal.com.cn

Product Information

Source

Rabbit

Isotype

IgG

Purification

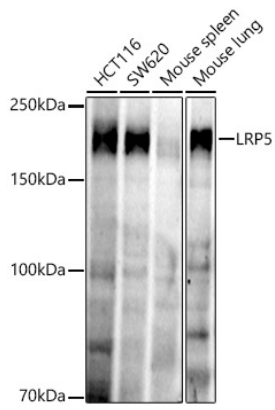
Affinity purification

Storage

Store at -20°C. Avoid freeze / thaw cycles.

Buffer: PBS with 0.09% Sodium azide,0.05% BSA,50% glycerol,pH7.3.

Validation Data



Western blot analysis of various lysates, using LRP5 Rabbit mAb (A22327) at 1:1000 dilution.
Secondary antibody: HRP-conjugated Goat anti-Rabbit IgG (H+L) (AS014) at 1:10000 dilution.
Lysates/proteins: 25µg per lane.
Blocking buffer: 3% nonfat dry milk in TBST.
Detection: ECL Enhanced Kit (RM00021).
Exposure time: 180s.