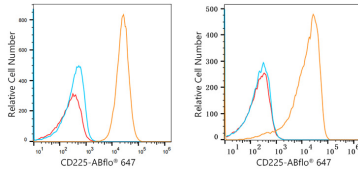
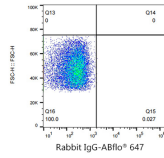


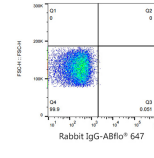
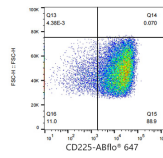
Validation Data



Flow cytometry: 1×10^6 U-251MG cells (Low Expression, left) and K-562 cells (right) were intracellularly-stained with ABflo® 647 Rabbit anti-Human CD225/IFITM1 mAb (A22311, 2 $\mu\text{g}/\text{mL}$, orange line) or ABflo® 647 Rabbit IgG isotype control (A22070, 2 $\mu\text{g}/\text{mL}$, blue line). Non-fluorescently stained was used as blank control (red line).



Flow cytometry: 1×10^6 K-562 cells were intracellularly-stained with ABflo® 647 Rabbit IgG isotype control (A22070, 5 $\mu\text{l}/\text{Test}$, left) or ABflo® 647 Rabbit anti-Human CD225/IFITM1 mAb (A22311, 5 $\mu\text{l}/\text{Test}$, right).



Flow cytometry: 1×10^6 U-251 MG cells (Low Expression) were intracellularly-stained with ABflo® 647 Rabbit IgG isotype control (A22070, 5 $\mu\text{l}/\text{Test}$, left) or ABflo® 647 Rabbit anti-Human CD225/IFITM1 mAb (A22311, 5 $\mu\text{l}/\text{Test}$, right).

