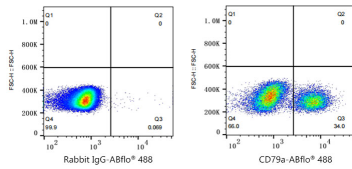




## Validation Data

---



Flow cytometry:  $1 \times 10^6$  Human PBMC were intracellularly-stained with ABflo® 488 Rabbit IgG isotype control (A22069, 5  $\mu$ l/Test, left) or ABflo® 488 Rabbit anti-Human CD79a mAb (A22300, 5  $\mu$ l/Test, right). Cells in the lymphocyte gate were used for analysis.