

# ABflo® 488 Rabbit anti-Human CD51 mAb

**Catalog No.: A22298**

## Basic Information

**Observed MW****Calculated MW**

116kDa

**Category**

Primary antibody

**Applications**

FC (intra)

**Cross-Reactivity**

Human

**CloneNo number**

ARC50621

**Conjugate**

ABflo® 488. Ex:491nm. Em:516nm.

## Background

The product of this gene belongs to the integrin alpha chain family. Integrins are heterodimeric integral membrane proteins composed of an alpha subunit and a beta subunit that function in cell surface adhesion and signaling. The encoded preproprotein is proteolytically processed to generate light and heavy chains that comprise the alpha V subunit. This subunit associates with beta 1, beta 3, beta 5, beta 6 and beta 8 subunits. The heterodimer consisting of alpha V and beta 3 subunits is also known as the vitronectin receptor. This integrin may regulate angiogenesis and cancer progression. Alternative splicing results in multiple transcript variants. Note that the integrin alpha 5 and integrin alpha V subunits are encoded by distinct genes.

## Recommended Dilutions

**FC (intra)**      5 µl per 10<sup>6</sup> cells in  
100 µl volume

## Immunogen Information

**Gene ID**

3685

**Swiss Prot**

P06756

**Immunogen**

Synthetic peptide. This information is considered to be commercially sensitive.

**Synonyms**

CD51; MSK8; VNRA; VTNR

## Contact

 | 400-999-6126 | [cn.market@abclonal.com.cn](mailto:cn.market@abclonal.com.cn) | [www.abclonal.com.cn](http://www.abclonal.com.cn)

## Product Information

**Source**

Rabbit

**Isotype**

IgG

**Purification**

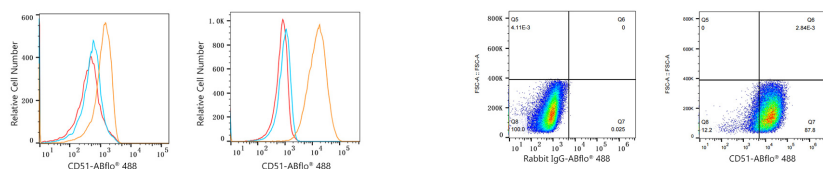
Affinity purification

**Storage**

Store at 2-8°C. Avoid freeze.

Buffer: PBS containing 0.2% BSA, preserved with proclin300 or sodium azide (as specified on the Certificate of Analysis), pH 7.3.

## Validation Data



Flow cytometry:  $1 \times 10^6$  MOLT-4 cells (Low Expression, left) and BeWo cells (right) were intracellularly-stained with ABflo® 488 Rabbit anti-Human CD51 mAb (A22298, 5  $\mu$ l/Test, orange line) or ABflo® 488 Rabbit IgG isotype control (A22069, 5  $\mu$ l/Test, blue line). Non-fluorescently stained cells were used as blank control (red line).

Flow cytometry:  $1 \times 10^6$  BeWo cells were intracellularly-stained with ABflo® 488 Rabbit IgG isotype control (A22069, 5  $\mu$ l/Test, left) or ABflo® 488 Rabbit anti-Human CD51 mAb (A22298, 5  $\mu$ l/Test, right).