

# Symmetric DiMethyl-Histone H3-R17 Rabbit mAb

Catalog No.: A22291 **Recombinant**

## Basic Information

**Observed MW**

17kDa

**Calculated MW**

15kDa

**Category**

Primary antibody

**Applications**

ELISA,DB,WB,IHC-P

**Cross-Reactivity**

Human, Mouse, Rat, Other (Wide Range Predicted)

**CloneNo number**

ARC56530

## Background

Histones are basic nuclear proteins that are responsible for the nucleosome structure of the chromosomal fiber in eukaryotes. This structure consists of approximately 146 bp of DNA wrapped around a nucleosome, an octamer composed of pairs of each of the four core histones (H2A, H2B, H3, and H4). The chromatin fiber is further compacted through the interaction of a linker histone, H1, with the DNA between the nucleosomes to form higher order chromatin structures. This gene is intronless and encodes a replication-dependent histone that is a member of the histone H3 family. Transcripts from this gene lack polyA tails; instead, they contain a palindromic termination element. This gene is found in the large histone gene cluster on chromosome 6p22-p21.3.

## Recommended Dilutions

<b>DB</b>	1:2000 - 1:4000
<b>WB</b>	1:1000 - 1:5000
<b>IHC-P</b>	1:50 - 1:200

## Immunogen Information

**Gene ID**

8290/8350

**Swiss Prot**

Q16695/P68431

**Immunogen**

A synthetic symmetric dimethylated peptide around R17 of human Histone H3-R17 (NP\_003520.1).

**Synonyms**

H3/A; H3C2; H3C3; H3C4; H3C6; H3C7; H3C8; H3FA; H3C10; H3C11; H3C12; HIST1H3A; Symmetric DiMethyl-Histone H3-R17

## Contact

		400-999-6126
		<a href="mailto:cn.market@abclonal.com.cn">cn.market@abclonal.com.cn</a>
		<a href="http://www.abclonal.com.cn">www.abclonal.com.cn</a>

## Product Information

**Source**

Rabbit

**Isotype**

IgG

**Purification**

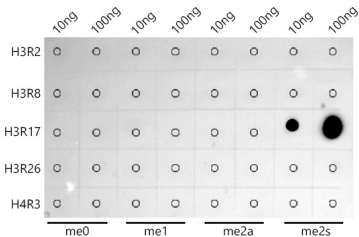
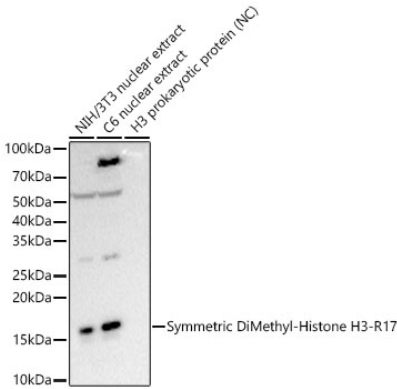
Affinity purification

**Storage**

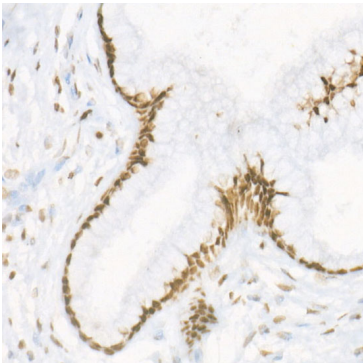
Store at -20°C. Avoid freeze / thaw cycles.

Buffer: PBS with 0.05% proclin300,0.05% BSA,50% glycerol,pH7.3.

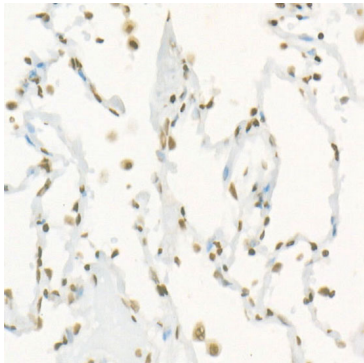
Validation Data



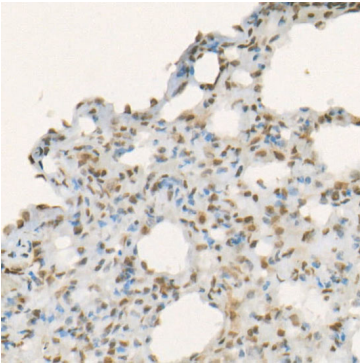
Dot-blot analysis of all sorts of peptides using Symmetric DiMethyl-Histone H3-R17 antibody (A22291) at 1:4000 dilution.



Immunohistochemistry analysis of Symmetric DiMethyl-Histone H3-R17 in paraffin-embedded human cervix cancer using Symmetric DiMethyl-Histone H3-R17 Rabbit mAb (A22291) at dilution of 1:200 (40x lens). Perform high pressure antigen retrieval with 10 mM citrate buffer pH 6.0 before commencing with IHC staining protocol.



Immunohistochemistry analysis of Symmetric DiMethyl-Histone H3-R17 in paraffin-embedded Human lung using Symmetric DiMethyl-Histone H3-R17 Rabbit mAb (A22291) at dilution of 1:100 (40x lens). Perform high pressure antigen retrieval with 10 mM citrate buffer pH 6.0 before commencing with IHC staining protocol.



Immunohistochemistry analysis of Symmetric DiMethyl-Histone H3-R17 in paraffin-embedded Rat lung using Symmetric DiMethyl-Histone H3-R17 Rabbit mAb (A22291) at dilution of 1:100 (40x lens). Perform high pressure antigen retrieval with 10 mM citrate buffer pH 6.0 before commencing with IHC staining protocol.