

# ACLY Rabbit mAb

Catalog No.: A22273

Recombinant

1 Publications

## Basic Information

**Observed MW**

125kDa

**Calculated MW**

121kDa

**Category**

Primary antibody

**Applications**

WB,IHC-P,ELISA

**Cross-Reactivity**

Human, Mouse, Rat

**CloneNo number**

ARC56113

## Background

ATP citrate lyase is the primary enzyme responsible for the synthesis of cytosolic acetyl-CoA in many tissues. The enzyme is a tetramer (relative molecular weight approximately 440,000) of apparently identical subunits. It catalyzes the formation of acetyl-CoA and oxaloacetate from citrate and CoA with a concomitant hydrolysis of ATP to ADP and phosphate. The product, acetyl-CoA, serves several important biosynthetic pathways, including lipogenesis and cholesterol synthesis. In nervous tissue, ATP citrate-lyase may be involved in the biosynthesis of acetylcholine. Multiple transcript variants encoding distinct isoforms have been identified for this gene.

## Recommended Dilutions

**WB** 1:2000 - 1:10000**IHC-P** 1:5000 - 1:20000

**ELISA** Recommended starting concentration is 1 µg/mL. Please optimize the concentration based on your specific assay requirements.

## Immunogen Information

**Gene ID**

47

**Swiss Prot**

P53396

**Immunogen**

Recombinant protein (or fragment). This information is considered to be commercially sensitive.

**Synonyms**

ACL; ATPCL; CLATP; ACLY

## Contact

 | 400-999-6126 | [cn.market@abclonal.com.cn](mailto:cn.market@abclonal.com.cn) | [www.abclonal.com.cn](http://www.abclonal.com.cn)

## Product Information

**Source**

Rabbit

**Isotype**

IgG

**Purification**

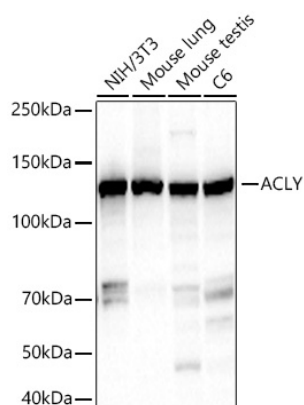
Affinity purification

**Storage**

Store at -20°C. Avoid freeze / thaw cycles.

Buffer: PBS with 0.09% Sodium azide, 0.05% BSA, 50% glycerol, pH7.3.

## Validation Data



Western blot analysis of various lysates using ACLY Rabbit mAb (A22273) at 1:7000 dilution incubated overnight at 4°C.

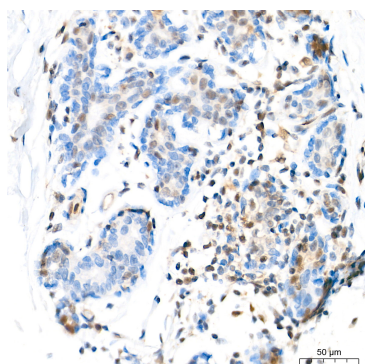
Secondary antibody: HRP-conjugated Goat anti-Rabbit IgG (H+L) (AS014) at 1:10000 dilution.

Lysates/proteins: 25 µg per lane.

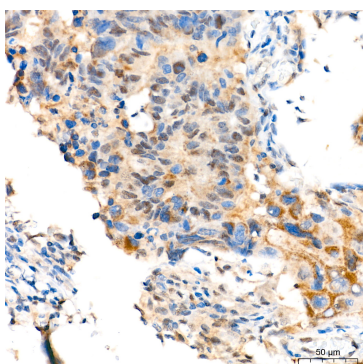
Blocking buffer: 3% nonfat dry milk in TBST.

Detection: ECL Basic Kit (RM00020).

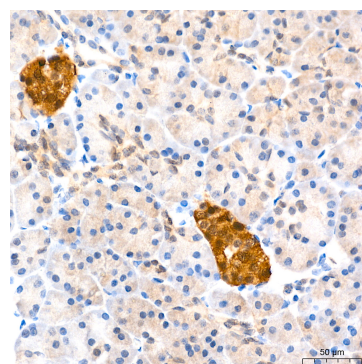
Exposure time: 20s.



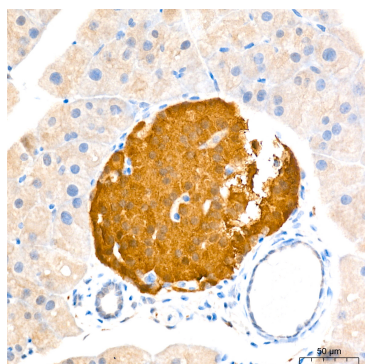
Immunohistochemistry analysis of paraffin-embedded Human breast cancer tissue using ACLY Rabbit mAb (A22273) at a dilution of 1:20000 (40x lens). High pressure antigen retrieval performed with 0.01M Tris-EDTA Buffer (pH 9.0) prior to IHC staining.



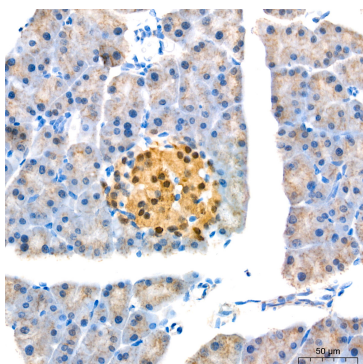
Immunohistochemistry analysis of paraffin-embedded Human colon carcinoma tissue using ACLY Rabbit mAb (A22273) at a dilution of 1:20000 (40x lens). High pressure antigen retrieval performed with 0.01M Tris-EDTA Buffer (pH 9.0) prior to IHC staining.



Immunohistochemistry analysis of paraffin-embedded Human pancreas tissue using ACLY Rabbit mAb (A22273) at a dilution of 1:20000 (40x lens). High pressure antigen retrieval performed with 0.01M Tris-EDTA Buffer (pH 9.0) prior to IHC staining.



Immunohistochemistry analysis of paraffin-embedded Mouse pancreas tissue using ACLY Rabbit mAb (A22273) at a dilution of 1:20000 (40x lens). High pressure antigen retrieval performed with 0.01M Tris-EDTA Buffer (pH 9.0) prior to IHC staining.



Immunohistochemistry analysis of paraffin-embedded Rat pancreas tissue using ACLY Rabbit mAb (A22273) at a dilution of 1:20000 (40x lens). High pressure antigen retrieval performed with 0.01M Tris-EDTA Buffer (pH 9.0) prior to IHC staining.