

# Melan-A/MART-1 Rabbit mAb

Catalog No.: A22259 **Recombinant**

## Basic Information

### Observed MW

20kDa

### Calculated MW

13kDa

### Category

Primary antibody

### Applications

WB, IF/ICC, IHC-P, ELISA

### Cross-Reactivity

Human

### CloneNo number

ARC55924

## Background

Located in endoplasmic reticulum membrane; melanosome; and trans-Golgi network.

## Recommended Dilutions

**WB** 1:1000 - 1:5000

**IF/ICC** 1:50 - 1:200

**IHC** 1:1000 - 1:4000

**ELISA** Recommended starting concentration is 1 µg/mL. Please optimize the concentration based on your specific assay requirements.

## Immunogen Information

### Gene ID

2315

### Swiss Prot

Q16655

### Immunogen

Synthetic peptide. This information is considered to be commercially sensitive.

### Synonyms

MART1; MART-1; Melan-A/MART-1

## Contact

 | 400-999-6126

 | [cn.market@abclonal.com.cn](mailto:cn.market@abclonal.com.cn)

 | [www.abclonal.com.cn](http://www.abclonal.com.cn)

## Product Information

### Source

Rabbit

### Isotype

IgG

### Purification

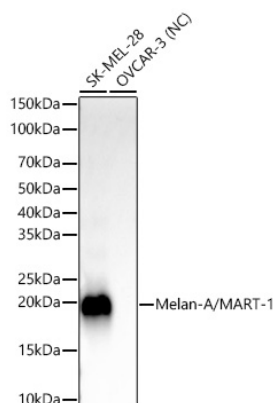
Affinity purification

### Storage

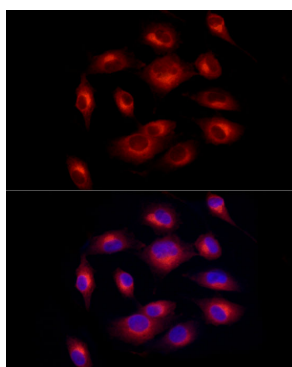
Store at -20°C. Avoid freeze / thaw cycles.

Buffer: PBS containing 50% glycerol and 0.05% BSA, preserved with proclin300 or sodium azide (as specified on the Certificate of Analysis), pH 7.3.

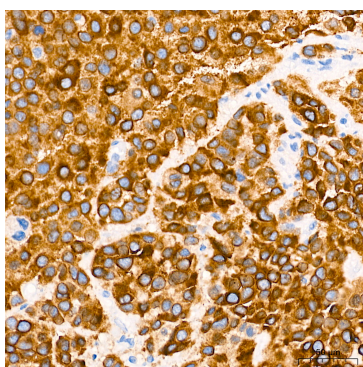
## Validation Data



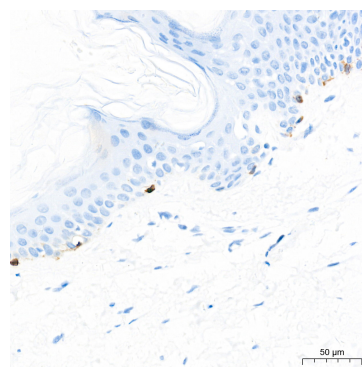
Western blot analysis of various lysates, using Melan-A/MART-1 Rabbit mAb (A22259) at 1:2000 dilution. Secondary antibody: HRP-conjugated Goat anti-Rabbit IgG (H+L) (AS014) at 1:10000 dilution. Lysates/proteins: 25µg per lane. Blocking buffer: 3% nonfat dry milk in TBST. Detection: ECL Basic Kit (RM00020). Exposure time: 10s.



Immunofluorescence analysis of SK-MEL-28 cells using Melan-A/MART-1 Rabbit mAb (A22259) at dilution of 1:50 (40x lens). Secondary antibody: Cy3-conjugated Goat anti-Rabbit IgG (H+L) (AS007) at 1:500 dilution. Blue: DAPI for nuclear staining.



Immunohistochemistry analysis of paraffin-embedded Human malignant melanoma tissue using Melan-A/MART-1 Rabbit mAb (A22259) at a dilution of 1:3000 (40x lens). High pressure antigen retrieval performed with 0.01M Tris-EDTA Buffer (pH 9.0) prior to IHC staining.



Immunohistochemistry analysis of paraffin-embedded Human skin tissue using Melan-A/MART-1 Rabbit mAb (A22259) at a dilution of 1:3000 (40x lens). High pressure antigen retrieval performed with 0.01M Tris-EDTA Buffer (pH 9.0) prior to IHC staining.