

IL1 β Rabbit mAb

Catalog No.: A22257 **Recombinant** **25 Publications**

Basic Information

Observed MW

17 kDa/31 kDa

Calculated MW

31 kDa

Category

Primary antibody

Applications

WB,IF/ICC,ELISA

Cross-Reactivity

Mouse

CloneNo number

ARC56180

Background

The protein encoded by this gene is a member of the interleukin 1 cytokine family. This cytokine is produced by activated macrophages as a proprotein, which is proteolytically processed to its active form by caspase 1. The encoded protein plays a role in thymocyte proliferation and is involved in the inflammatory response.

Recommended Dilutions

WB 1:500 - 1:2000

IF/ICC 1:200 - 1:800

ELISA Recommended starting concentration is 1 μ g/mL. Please optimize the concentration based on your specific assay requirements.

Immunogen Information

Gene ID

16176

Swiss Prot

P10749

Immunogen

Recombinant protein (or fragment). This information is considered to be commercially sensitive.

Synonyms

IL-1b; IL-1beta; IL1 β

Contact

 | 400-999-6126

 | cn.market@abclonal.com.cn

 | www.abclonal.com.cn

Product Information

Source

Rabbit

Isotype

IgG

Purification

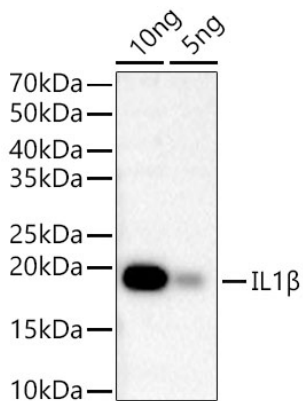
Affinity purification

Storage

Store at -20°C. Avoid freeze / thaw cycles.

Buffer: PBS containing 50% glycerol and 0.05% BSA, preserved with proclin300 or sodium azide (as specified on the Certificate of Analysis), pH 7.3.

Validation Data



Western blot analysis of Recombinant Mouse IL-1 beta Protein (RP01340), using IL1 β Rabbit mAb (A22257) at 1:2000 dilution.

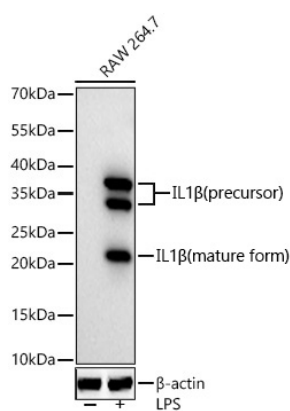
Secondary antibody: HRP-conjugated Goat anti-Rabbit IgG (H+L) (AS014) at 1:10000 dilution.

Lysates/proteins: 10ng/5ng per lane.

Blocking buffer: 3% nonfat dry milk in TBST.

Detection: ECL Basic Kit (RM00020).

Exposure time: 20 s.



Western blot analysis of lysates from RAW 264.7 cells using IL1 β Rabbit mAb (A22257) at 1:1000 dilution incubated overnight at 4°C. Raw264.7 cells were treated with LPS (1 μ g/ml) at 37°C for 8 hours.

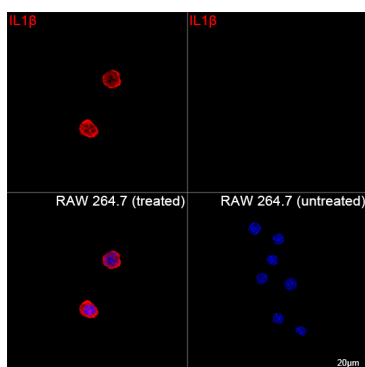
Secondary antibody: HRP-conjugated Goat anti-Rabbit IgG (H+L) (AS014) at 1:10000 dilution.

Lysates/proteins: 30 μ g per lane.

Blocking buffer: 3% nonfat dry milk in TBST.

Detection: ECL Basic Kit (RM00020).

Exposure time: 90 s.



Confocal imaging of RAW 264.7 cells (treated with BFA and LPS) and RAW 264.7 cells (untreated) using IL1 β Rabbit mAb (A22257, dilution 1:200) followed by a further incubation with Cy3 Goat Anti-Rabbit IgG (H+L) (AS007, dilution 1:500) (Red). DAPI was used for nuclear staining (Blue). Objective: 100x.