

APRR7 Rabbit pAb

Catalog No.: A22255

Basic Information

Observed MW

80kDa

Calculated MW

Category

Primary antibody

Applications

WB, ELISA

Cross-Reactivity

Arabidopsis thaliana

Background

PRR7 and PRR9 are partially redundant essential components of a temperature-sensitive circadian system. CCA1 and LHY had a positive effect on PRR7 expression levels. Acts as transcriptional repressor of CCA1 and LHY.

Recommended Dilutions

WB 1:500 - 1:1000

ELISA Recommended starting concentration is 1 µg/mL. Please optimize the concentration based on your specific assay requirements.

Immunogen Information

Gene ID

831793

Swiss Prot

Immunogen

Recombinant protein (or fragment). This information is considered to be commercially sensitive.

Synonyms

APRR7; F9G14.120; F9G14_120; pseudo-response regulator 7

Contact

☎ | 400-999-6126

✉ | cn.market@abclonal.com.cn

🌐 | www.abclonal.com.cn

Product Information

Source

Rabbit

Isotype

IgG

Purification

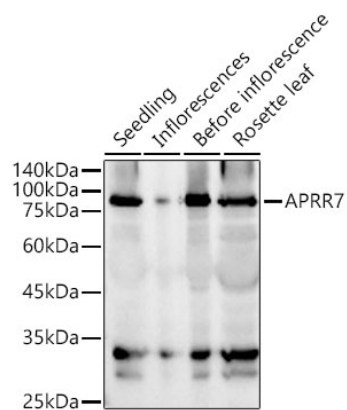
Affinity purification

Storage

Store at -20°C. Avoid freeze / thaw cycles.

Buffer: PBS containing 50% glycerol, preserved with proclin300 or sodium azide (as specified on the Certificate of Analysis), pH 7.3.

Validation Data



Western blot analysis of extracts of various tissues from *Arabidopsis thaliana*, using APRR7 Rabbit pAb (A22255) at 1:900 dilution.

Secondary antibody: HRP-conjugated Goat anti-Rabbit IgG (H+L) (AS014) at 1:10000 dilution.

Lysates/proteins: 25µg per lane.

Blocking buffer: 3% nonfat dry milk in TBST.

Detection: ECL Basic Kit (RM00020).

Exposure time: 10s.